



*“The zoo misled voters in selling a 2008 bond about plans for an offsite preserve to provide more space for the zoo’s elephants but instead plans to bring in additional elephants and ramp up a second breeding program.”*

*In Defense of Animals*

## Oregon Zoo elephants suffer in equivalent of puppy mill

On Packy’s birthday each year, the Oregon Zoo holds a photo op party for its famous pachyderm, the first elephant born in the Western Hemisphere in 44 years. Invariably, he smashes the “cake” with one hearty stomp, which is replayed on local television, narrated by condescending news people chuckling over the Packy’s “celebration.”

It is becoming starkly apparent, however, that Packy’s 51 years in the zoo have been anything but cause for rejoicing.

Although he may have gotten more press coverage than any elephant in history, the other 364 days in Packy’s calendar are filled with boredom, head-bobbing and other anxiety-related behavior problems and chronic physical disorders endemic to

zoo elephants. Last month, Zoo officials confirmed that Packy suffers from a difficult-to-treat case of tuberculosis.

In Defense of Animals, an international nonprofit devoted to exposing abuses of elephants in zoos and circuses, obtains medical records from public zoos in the United States. This is what they uncovered in Packy’s file:

“Packy has chronic prob-

lems with cracked nails, lesions and an abscess on right front foot. He also has a recurring abscess/lesion on the left side of his head from lying on concrete floor, and a hygroma on the right side of his head. Diagnosed as emaciated Jan. 31, 2003.

“Foot injury from kicking at door (‘which he’s apt to do’). Possible ankus wound on right front limb. Jan. 24, 2001.

“Packy has sired a number of calves. He has also been the object of repeated attempts to extract sperm (through rectal palpitation and use of artificial vaginas) for artificial insemination. He has also been placed on Dr. Ursula Bechert’s Ibuprofen and Phenylbutazone dosage studies which require repeated restraint and bleedings.”

An ankus, also known as an elephant goad or bullhook, is defined by Wikipedia:

“The elephant goad or Añkuśa (Sanskrit) is a tool employed in the handling and training of elephants, the largest land animals. It consists of a hook which

is attached to a 2- or 3-foot handle. The hook is inserted into the elephant’s sensitive skin, either slightly or more deeply, to cause pain and induce the elephant to behave in a certain manner.”

It’s not as if Packy’s handlers have it in for him. Reports on Portland’s five other elephants at the zoo in 2005 were at least as grim. This is how In Defense of Animals summarized the Oregon Zoo’s medical reports on its own elephants:

“Each of the six Oregon Zoo elephants suffers from foot disease—cracked nails, abscesses, lesions, ulcers, fissures, fractured toes. (The number does not include Hugo, who also had suffered from chronic nail infections prior to his death.) The problems require frequent to almost daily intervention from keepers to flush ▶

Continued page 6

## Queen Anne Victorian may be demolished



An impressive Queen Anne Victorian mansion at Northwest 24th and Quimby is in jeopardy of demolition.

Lake Oswego-based developer Marty Kehoe, who built the Cambridge Condominiums on Northwest Westover along with several row house projects, told the Examiner that he had not decided whether to demolish, remodel

or retain the house. Kehoe said he has also acquired the house immediately to the north, which will come down to make way for new construction of row houses or perhaps an apartment building.

The larger house, built in 1898 by Max Goldsmith, has housed Howard Hermanson’s interior design business since 1963.

“The neighbors aren’t going to like it,” said Hermanson, referring to demolition, which ▶

Continued page 24



**A MOST DIVINE VALENTINE  
SWEETHEART OF HELVETIA**



**22380 NW Meier Road**

A New England Country Home built by experienced artisans using the best of materials and skills is the anchor for this magical Helvetia property. Fill the house with friends and family for holidays, summer house parties, and retreats. An additional apartment over the carriage house is perfect for longer staying visitors. Situated on the SW slopes of a sunny hill it has producing pinot noir and pinot gris vineyards, apple orchards with 16 varieties, and enchanting gardens and lakes. A large conservatory for thousands of plants, cider/wine processing barn, 6-car carriage house, and a pool/spa and tennis court are also featured.

5 bedrooms, 5 1/2 baths, 10,176 Sq. Ft. house, 93.5 acres on 3 tax lots. MLS #13346086 www.highgroveofhelvetia.com \$4,999,900.

**A VALENTINE AS FINE AS WILLAMETTE VALLEY WINE  
SILVERTON OREGON BUNGALOW**



**222 Coolidge Street**

Get away from the hustle and bustle of the big city and find Quiet, Cultured, Historic, Diverse, Active, Friendly Silverton! A 1917 Craftsman bungalow on a street totally preserved and looking the same as it did a century ago is within walking distance of everything that you might need. The original 1917 character of the 2-storied treasure includes a whimsical period kitchen and a garage/shop. The lush backyard has a stone patio, mature flower beds and a picture-perfect playhouse that gives the kids and the gardeners room to play. Sit and read on the front porch or walk half a block to Coolidge-McClain Park to play. Live, love and play in all the Willamette Valley has to offer!

3 bedrooms, 1 1/2 baths, 1,978 Sq. Ft. plus full basement with high ceilings. \$379,000. MLS #14177694

**A Neighborhood Picture Show**



Henry Thiele Restaurant stood at the intersection of 23rd Avenue and West Burnside for 60 years. Have you ever seen what was there before that...and even before that?

**"The History of NW 23rd Avenue"**

A slide presentation covering more than a century of changes!

**McMenamins Mission Theater**

1624 NW Glisan Street

Friday March 21st, 2014

Doors open @6:0 p.m. - Show @7:00 p.m.

Free Admission - 21 and Over

Produced by Slabtown Picture Shows

(A Committee of the Slabtown Community Festival)

Sponsored by the Dan Volkmer Team

Presented by Mike Ryerson

**WON'T YOU BE MINE, IN THE SUNSHINE?  
SOUTH-FACING, END UNIT TOWNHOUSE**



**5504 NE Mallory Street**

Piedmont in NE Portland is a dynamic neighborhood, proud of its regeneration and full of block parties, dog walkers, joggers, bicyclists and babies in strollers. This "Brownstone" townhouse, built in 2007 is made of high-quality materials, architectural details and craftsmanship. Big plentiful windows in the end unit bathe the rooms with bright light and warmth. A well thought-out floor plan makes living easy and offers versatility in usage. The ground floor bedroom can double as office or art studio with a separate entrance. No HOA dues. It is settled into the leafy green street just across from the whimsical Mallory Meadows Park.

3 bedrooms, 2 1/2 baths, 2,233 Sq. Ft. MLS #14550014 \$399,000.

**BACKGROUND PHOTO**

*The Dr. William Jones House was built at the northeast corner of NW 23rd & Flanders Street in 1904. The house was torn down in 1972. Today Kitchen Kaboodle stands in its place. Hear more stories like these and about your neighborhood's past at the NW Neighborhood Picture Show.*

**THE DAN VOLKMER TEAM**

DAN VOLKMER PRINCIPAL BROKER  
BURDEAN BARTLEM & KISHRA OTT, BROKERS

*For your real estate needs in the Northwest neighborhood.  
Call us to find out your property's top market value.*



**503-497-5158**

See our new website at [www.danvolkmer.com](http://www.danvolkmer.com)



*Dan, Kishra, Burdean, Watson & Ted*



# Readers Reply

Letters can be sent to [allan@nwexaminer.com](mailto:allan@nwexaminer.com) or 2825 NW Upshur St., Ste. C, Portland, OR 97210. Letters should be 300 words or fewer; include a name and a street of residence. Deadline third Saturday of the month.

## Define subsidy first

Thank you for your continual coverage of the Centennial Mills project. Once again, I am quite concerned about Jordan Schnitzer's approach; suggesting it was not taken on for financial reasons is disingenuous. Why else would they do it? Clearly the discussion that there may restaurants begs the question of the role of public subsidies.

You report that the developers have a good idea of what it will cost them to fund any of seven schemes and want public money for the rest. This is simply not the way to go about such a project with public money. The public commitment should be up front and visible, for as we know, these funds may be lost if it doesn't work.

Instead of the developers having a fixed commitment, let the public provide a fixed commitment and then let them work their investment decision around that amount. There is need for equity in such projects. Developers, for example, can write off losses against their fees. They can sell off distressed property and recoup some value. Public funds inextricably bound to a private project may never be returned.

I agree with discovering "the right thing for the long run," but they need to clearly establish what their part of the total project will be. Then we can better understand what the public share might be.

Yes, this could be an important heritage project, but as a taxpayer, I want to see all of the cards face up on the table. What is necessary is a full statement of the payoff of the

public investment. Subsidies often are treated as gifts.

We must hold the developers to a greater standard of openness. I hope that Mayor Hales requires that as well. Public-private investments can lead to good results. However, the responsibilities of the private partners to share detailed financial information are substantial. We have yet to see that.

*Ron Savitt  
NW Westover Rd.*

## Southwest coverage

I have seen three or four issues of the Northwest Examiner and really enjoy it. I really like the local slant and the familiarity your writers seem to have with the story area.

Sure wish it was called Northwest and Southwest Examiner, though, say the river to the stadium, Burnside to I-405 and Portland State University.

It's a great paper, thanks.

*Tim McCann  
SW Clay St.*

*Editor's note:* The Examiner has always covered a slice of Southwest Portland that includes Goose Hollow and the area north of Highway 26.

## Good job

You're doing a good job. The January issue was especially good. Keep it up and thanks.

*Reed Wilson  
NW 12th Ave.*

Continued page 8

# Index

|                            |    |
|----------------------------|----|
| OBITUARIES . . . . .       | 4  |
| PEARL COLUMN . . . . .     | 12 |
| GOING OUT . . . . .        | 16 |
| COMMUNITY EVENTS . . . .   | 20 |
| BUSINESS & REAL ESTATE . . | 21 |

# The NW Examiner

VOL. 27, NO. 6 // FEBRUARY, 2014

**EDITOR/PUBLISHER** ..... ALLAN CLASSEN  
**GRAPHIC DESIGN** ..... VADIM MAKOYED  
**PHOTOGRAPHY** ..... JULIE KEEFE  
**ADVERTISING** ..... JOLEEN JENSEN CLASSEN, DENNY SHLEIFER  
**CONTRIBUTORS:** JEFF COOK, CASSANDRA KOSLEN, DONALD NELSON, KATE WASHINGTON



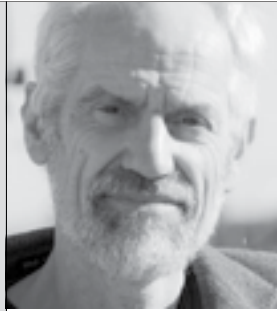
AWARD-WINNING PUBLICATION



ANNUAL SPONSOR



Published on the first Saturday of each month.  
 CLR Publishing, Inc., 2825 NW Upshur St., Ste. C, Portland, OR 97210, 503-241-2353.  
 CLR Publishing, Inc. Copyright 2014. [allan@nwexaminer.com](mailto:allan@nwexaminer.com) • [www.nwexaminer.com](http://www.nwexaminer.com)



# Editor's Turn

BY ALLAN CLASSEN  
EDITOR & PUBLISHER

## A disclaimer

For the past year or so, you may have noticed that I've taken on a new role. I've been helping establish a nonprofit organization, the Slabtown Community Association.

My policy has been to remain independent of organizations and entities that I may report on. That's so I can report freely and without conflicting loyalties. It's a good rule. Let me explain why I broke it.

For two decades at least, I've felt that an organization was needed to represent businesses in the Northwest District, particularly the northern half of the district known as Slabtown. The Nob Hill Business Association, formed in 1987, was co-founded by Richard Singer, the dominant commercial property owner in the southern half of Northwest 23rd Avenue. The association has leaned in the direction of Singer tenants, primarily women's boutiques whose owners saw their market as suburbanites and tourists. This attitude led to policies, such as a campaign to build commercial parking structures in residential zones, that were deeply resented by local residents.

The Nob Hill Business Association never had much traction in the northern end of the neighborhood, where businesses were more diverse and spread out and also less toney. As this area gradually grew and established its own identity—notably with the launching of the annual Slabtown Festival in 2007—the lack of a structure to bring the business community together became more obvious. I saw it as a lost opportunity to present Slabtown as a locally oriented marketplace where business operators and residents were on the same page, where the success of shops and restaurants were seen as making life better for nearby residents and where events like the Slabtown Festival and summer concerts in Wallace Park benefited all regardless of their station or role in the neighborhood.

In late 2012, business people and community leaders of similar inclinations came together to establish an association. The consensus was that it should be called a community association—as opposed to a business association—in keeping with these values. I have served on a steering committee guiding the process, overseeing creation of a nonprofit corporation and

scheduling public meetings.

In keeping with the community theme, membership was opened to residents and businesses. Dues are set at only \$25 a year to emphasize the inclusive mission.

Future programs and policies of the Slabtown Community Association remain up in the air until the membership reaches critical mass and can express its wishes. So far, the association has taken two initiatives: a "welcome wagon" tote bag filled with samples and offers from local merchants to be given to new residents and bi-monthly public meetings with speakers.

The first meeting had a presentation on the Northwest Parking Plan by two city officials and the second one was a PowerPoint show on the Con-way redevelopment. The speakers have been brought in for informational purposes only; at this stage the association is taking no positions on public matters. However, I realize that even educational events can raise issues and shift public opinion. In a real sense, information is power, and those who generate or shape information can affect the neighborhood association, elected officials and others working on these issues.

For reasons like these, I am in a sensitive position. I've been reporting on Slabtown Community Association meetings and giving plenty of space its activities. These reports are as neutral



"I'm glad I asked me that."

and nonpartisan as I can make them while conveying the news, but just the decision to publish the stories or give greater prominence in print to SCA affairs than to other topics is an editorial judgement.

I have told my colleagues on the Slabtown Community Association Steering Committee that I will not chair the organization. My goal is that the association will elect its first board of directors sometime this year, and that I will not be on it.

Until that time arrives, you as readers should know about my involvement with the association and consider that fact when reading Examiner coverage on the topic. ■

# — Obituaries —

The Northwest Examiner publishes obituaries of people who lived, worked or had other substantial connections to our readership area, which includes Northwest Portland, Goose Hollow, Sauvie Island and areas north of Highway 26. If you have information about a death in our area, please contact us at [allan@nwexaminer.com](mailto:allan@nwexaminer.com). Photographs are also welcomed. There is no charge for obituaries in the Examiner.



## Marjorie M. Fritz

Marjorie Marie Fritz, a longtime resident of Cedar Mill, died Jan. 9 at age 90. She was born May 9, 1923, in Spenser, Neb. The family moved to Sandpoint, Idaho, where she graduated from Sandpoint High School in 1941. She and her family moved to the Cedar Mill area in 1963. She was a longtime member of the Cedar Mill Garden Club and a volunteer at the Cedar Mill Library. She is survived by her sister, Donna Harding; daughters, Valerie Moser and Carla Fritz; son, John; five grandchildren; and five great-grandchildren. Her husband John predeceased her in 2004.

## Darrell 'Bud' Logan

Darrell Keith "Bud" Logan, a former Northwest District resident, died Jan. 7 at age 81. He had lived on Northwest Pettygrove, 23rd Place and 28th Place. He worked as a salesman. He is survived by his brother and two sons.



## Beatrice Proefrock

Beatrice Helen Proefrock, a former Northwest Portland resident and business owner, died Jan. 16 at age 91. Beatrice Mazurosky was born in Portland June 11, 1922, and attended Buckman Elementary School. She owned 23rd Avenue Records. She is survived by her sons, George and Richard Brill; five grandchildren; 10 great-grandchildren; and two great-great-grandchildren. She was preceded in death by her husband, Robert; and sister, Shari.

## Ron Tonkin

Ron Tonkin, a graduate of Lincoln High School and member of Temple Beth Israel, died Jan. 17 at age 82. He was born May 4, 1931 and attended Laurelhurst Elementary School and Lincoln High. He graduated from the University of Washington in 1952 with a bachelor's degree in business administration. He served as an officer in the U.S. Army Transportation Corps during the Korean War. After his service, he joined the family auto business, which he built into the state's largest dealership chain. In 1989, he was named chairman of the National Automobile Dealers Association. He is survived by his wife, Marcy; sons Barry, Ed and Brad; and five grandchildren.

## Pearl Tanner

Pearl Tanner, a resident of Northwest Portland, died Jan. 3 at age 91. She was born in Woodland, Wash., March 7, 1922. She owned The Little Thrift Store on West Burnside and 19th streets. She also worked for the Perry Center Thrift Shop and Naideen Leavens for many years as a seamstress. She was preceded in death by her son, Thomas Beebe; brothers, William and Frederick; and sister, Beatrice.

## Eugene Woodworth

Eugene Woodworth, who lived on Northwest Thurman Street for many years, died Dec. 21 of congestive heart failure at age 85. He and his life partner, Eric Marcoux, made the local news last December when they went to Vancouver, Wash., to be legally married after being together for 60 years. He was a ballet dancer and active in Friendly House's Gay and Grey program.



## Howard F. Wolfe

Howard F. Wolfe, a graduate of Lincoln High School and active member of Temple Beth Israel, died Jan. 22 at age 94. He was born Sept. 3, 1919, in Portland. After graduating from Reed College, he served as an army medic in World War II. His entire working career was at the Portland Allergic Clinic, where he was head of the laboratory. He volunteered for the Youth Education Program at Temple Beth Israel and for Meals on Wheels. He married Frances Aiken in 1944. He is survived by his wife; sons, Stephen and Ken; five grandchildren; and nine great-grandchildren.

## Margaret F. Crumpacker

Margaret Feir Crumpacker, who grew up in Northwest Portland and attended Catlin Gabel School, died Jan. 7 at age 96. Margaret Feir was born April 1, 1917, in Winnipeg, Manitoba, and moved to Portland in the 1930s. She attended Scripps College. After living in Coos Bay for 25 years, she returned to Portland in 1982, where she volunteered for Doernbecher Hospital, Junior League and the League of Women Voters. In 1940, she married James C. Crumpacker. He died in 2006. She is survived by her son, James; daughters, Cully and Victoria; six grandchildren; and eight great-grandchildren.

## Death Notices

- Betty R. Cook, 70**, graduate of Lincoln High School.
- Andrew A. Delgado Sr., 75**, graduate of Lincoln High School.
- David A. Kouva, 61**, attended Skyline Elementary School.
- Paul Nagel, 86**, member of Multnomah Athletic Club.
- Annabeth Parker-Jamieson, 65**, volunteer guide for Portland Japanese Gardens.
- Walter H. Pendergrass, 88**, member of Multnomah Athletic Club.
- Gail D. Post, 74**, member of Multnomah Athletic Club.
- Malcolm Reed, 79**, member of Multnomah Athletic Club.
- David S. Strauss, 84**, graduate of Lincoln High School.
- Michael G. Tangvald, 46**, member of Multnomah Athletic Club.
- Robin B. Connors, 73**, former rector St. Mark's Anglican Church.
- George D. Watson Sr., 94**, graduate of Lincoln High School.

## Correction

In last month's obituary for Lloyd Hickethier, the photo was of his brother, Charles, who died seven months earlier.

**ZION LUTHERAN CHURCH**  
 Sunday Morning Worship 11 a.m.,  
 3rd Sunday  
 German Language Worship 9 a.m.  
**503-221-1343**  
 1015 SW 18<sup>th</sup> Ave. Portland 97205  
[www.zion-portland.org](http://www.zion-portland.org)  
 Free parking Sunday morning  
 at U-Park lot 18<sup>th</sup> and Salmon  
**"Celebrating the Presence of God in the Heart of the City"**  
 ALL ARE WELCOME

**FIRST IMMANUEL LUTHERAN CHURCH**  
 Sunday Worship: 11 AM  
 Education Hour: 9:45 AM  
*A Welcoming Community  
 Centered in Christ's Love,  
 Joyfully Reaching Out  
 Together*  
 NW 19<sup>th</sup> & Irving, 503.226.3659  
[www.firstimmanuelluth.org](http://www.firstimmanuelluth.org)

**Linnton Feed & Seed**  
 Dan Cadmus  
 Owner  
 10920 NW Saint Helens Rd  
 Portland OR 97231  
 Phone: 503-286-1291  
 Fax: 503-286-9592  
 e-mail: [cadmus@spiritone.com](mailto:cadmus@spiritone.com)

**WOOD FLOORS**  
 Restored to their original beauty  
 Specializing in Portland's Older Homes  
 We Listen To Your Desires, Evaluate Your Floor's Condition and Make Recommendations  
 to Achieve Maximum Beauty & Utility  
 • Restoration Repairs & Refinishing • Install New Wood Floors  
 • State of the Art Dust Containment • Environmentally Friendly Finishes  
**CZ Becker Co.**  
[www.czbecker.com](http://www.czbecker.com) 503.282.0025  
 Our New Year's gift to you - 10% off any Wood Floor Restoration over \$1000 through March 31, 2014

**O'NEILL**  
 moving  
 AND  
 storage  
 Bradley Boland, Sr.  
 President  
 6077 SW Lakeview Blvd., Ste. D  
 Lake Oswego, Oregon 97035  
 Main: 503-747-3630  
 Cell: 503-957-9599  
[www.oneilltransferandstorage.com](http://www.oneilltransferandstorage.com)  
[bradleyboland@hotmail.com](mailto:bradleyboland@hotmail.com)

*Because we only have one Earth...*  
**Gaia Couture**  
 100% Organic Cotton, Bamboo  
 Wool, Linen  
 Organic Linen  
 Eco-Friendly Gifts  
 Up-cycled Jewelry and More!  
**Gaia Couture**  
 921 NW 23rd Ave @ Lovejoy  
 (971) 266-8650  
[www.gaia couture.com](http://www.gaia couture.com)  
 Organic • Sustainable • Ethical Fashion



# Local recreation projects tap grants

Five local recreation projects are in line to receive a total of \$96,000 in grants this year. The allocations were recommended by a panel representing three neighborhoods sharing the fund, which was created to mitigate the impact of the I-405 Freeway on adjacent areas.

The recommendations must be approved by Oregon Community Foundation, which administers the fund.

Projects are limited to capital improvements related to recreation and must go to nonprofit organizations. ■

## I-405 PARKS AND RECREATION FUND GRANTS

| APPLICATION AMOUNT                       | PROJECT   |
|--|---|
| Hillside Community Center<br>\$14,679    | Waterproof foundation, install drainage system. |
| Northwest Children's Theater<br>\$20,000 | Install emergency exit lighting.                |
| Linnton Community Center<br>\$16,212     | Fill and paint exterior walls to stop leaking.  |
| Friendly House<br>\$14,879               | Gym floor mats, tables, chairs.                 |
| Hillside Soccer Club<br>\$13,000         | Storage shed, benches and water fountain.       |

# Linnton plywood site could become nature reserve

Plans to sell the Linnton plywood mill property by Aug. 15 have been shared with members of the worker-owned cooperative that operated the plant until 2001.

According to a Dec. 1, 2013, letter, the property will become a "restoration project."

A similar arrangement was made for the 32-acre former Alder Creek sawmill complex at the south-east tip of Sauvie Island two years ago. California-based Wildlands company restored habitats for native fish species and other wildlife.

According to the letter issued by the Linnton Plywood Association board of directors, the buyer has made nonrefundable advance payments, which will be used to cover association expenses and "two years worth of deferred property taxes to prevent disclosure."

A front page Oregonian story last November identified the association as having the second largest delinquent tax obligation, \$378,000, in the county. ■



**Therapeutic Associates**  
NW PORTLAND PHYSICAL THERAPY

**DEDICATED TO HELPING YOU  
ACHIEVE YOUR PERSONAL BEST**

Our team of experts are committed to helping you reach your personal finish line!  
Appropriate for all ages and abilities, our sports programs are designed to maximize performance and prevent injury.

**CYCLE FIT      SPORTSMETRICS™**  
**RUNNING ANALYSIS      TPI GOLF FITNESS ANALYSIS**

Todd Cruz *PT, MS, Clinic Director*

Carrie Dixon *Office Manager*

2701 NW Vaughn St, Suite 155 • Portland, OR 97210 | 503-227-3479

[www.therapeuticassociates.com/NWPortland](http://www.therapeuticassociates.com/NWPortland)

[nwportlandpt@taiweb.com](mailto:nwportlandpt@taiweb.com)

### Pirouette Powerrise



Hello neighbor! We have opened a showroom in the neighborhood and would be thrilled to help you with all your window coverings needs! We are a Hunter Douglas dealer and we've been covering our client's windows for the past 15 years. We have trained interior designers who will work with you to make sure you're finding the perfect solution for every room in your home and once your window coverings are ready, one of our Hunter Douglas certified installers will get everything installed. Our window coverings are sure to make your home the envy of the entire neighborhood!

**premier**  
WINDOW COVERINGS | DESIGN

1828 NW Overton  
Portland, OR 97209  
503.533.0922  
Monday-Friday: 10-5  
Saturday: 10-4  
Sunday: Closed (nap time)

**HunterDouglas**



**Pro Photo Supply**  
INC.

**February**  
Monthly Specials

**STORE**

**Nanuk Hard Cases**

**25% OFF**

Tough hard sided cases from Nanuk come in a variety of sizes.

**LAB**

**Metal Art Prints**

**15% OFF**

Your photo printed on metal! Get a unique, luminescence and custom look to your print.

[www.ProPhotoSupply.com](http://www.ProPhotoSupply.com) ■ [blog.prophotosupply.com](http://blog.prophotosupply.com)  
503-241-1112 ■ 1112 NW 19th (at Marshall), Portland, OR  
STORE HOURS ■ MON 7:30-6:00 ■ TUES-FRI 8:30-6:00 ■ SAT 9:00-5:00 (RENTAL CLOSED)







Members of Free the Oregon Zoo Elephants protest at the zoo entrance in December. Their efforts were bolstered by a letter from Lilly Tomlin calling for Packy to be released to a sanctuary.

Continued from page 1

infected areas and debride (cut away) necrotic (dead) tissue. Even the youngest elephants suffer from foot problems. Chendra, an orphan from Malaysia, developed foot problems within two months of coming to the Oregon Zoo.

“Several of the elephants also suffer from arthritis. Ankus wounds have been identified on at least four of the zoo’s six elephants. In 2000, the USDA formally charged the Oregon Zoo with violating the Animal Welfare Act in the abuse of Rose-Tu, who had ankus wounds all over her body. These charges do not seem to have deterred Oregon Zoo keepers from aggressive ankus use, as ankus wounds were identified on elephants for several years following these charges.

“Behavioral problems in the records include: stereotypical swaying and pacing, aggressive acts against other elephants, and bulls pounding walls and doors.”

We asked Kim Smith, current director of the Oregon Zoo, to respond to the abuses and health problems documented by her agency’s staff and compiled by IDA.

She described the report as “outdated

and inaccurate.”

“The information link you provide is from In Defense of Animals, a California-based anti-zoo organization engaged in an aggressive, national campaign to remove all elephants from zoos,” she said.

While Smith is correct about the secondary source of the report, the underlying data were compiled by Oregon Zoo personnel, which she should have

*“Wild elephant expert Dr. Joyce Poole says that elephants who rock their heads back and forth, as Packy does, are suffering from extreme stress.”*

been aware of. Still, she was more interested in discrediting the messenger.

“Several years ago, the zoo provided IDA with more than 1,000 pages of detailed health records on all of our elephants,” she said. “The zoo has a philosophy to be open and transparent and share information with the public. It is how we have earned public trust and support.”

This openness is also required by Oregon law. Records of government entities must be released to the press and public.

*“The psychological pain is the worst. The elephants are literally insane from boredom.”*

*Courtney Scott of Free the Oregon Zoo Elephants*

Nicole Meyer of In Defense of Animals said the reason the medical reports from the Oregon Zoo don’t cover more recent years is that the zoo has resisted their release by demanding exorbitant fees.

Smith spent no time apologizing for blatant pre-2006 cases of abuse or neglect.

“As expected, IDA misinterpreted information and took records out of context in an attempt to discredit the zoo’s elephant program,” she said. “The fact is, we keep these detailed records and are open about them because we care about our elephants. If one of our elephants stubs its toe, keepers call the veterinarians to take a look, and they are going to record it in the elephant’s medical records.”

Stubbed toes may or may not make it

into the reports, but more serious health problems certainly do. We asked Smith to explain what is being done to prevent recurrences of past shortcomings. We got no response by our deadline.

Failure to learn from past errors may be why In Defense of Animals still ranks the Oregon Zoo as one of the 10 worst zoos for elephants in North America. It was No. 8 in 2013, the fifth time it has been on the list. This explanation accompanied its latest “award”:

“The Oregon Zoo spent early 2013 smoothing out a public relations nightmare after admitting that an

elephant born there was contractually owned by a company that rents animals for entertainment.

“The zoo has yet to explain why it misled voters in selling a 2008 bond about plans for an offsite preserve to provide more space for the zoo’s elephants. The zoo pulled the rug out from under voters—and the elephants—when it quietly shifted gears to instead plan a remote center for bringing in additional elephants and ramp up a second breeding program.

“Meanwhile, the zoo is spending \$53 million—more than twice the annual budget for the Kenya Wildlife Service, which protects tens of thousands of elephants—to expand the exhibit from 1.5 acres to 6.25. This will provide no meaningful relief for the zoo’s eight Asian elephants who suffer from a range of captivity-related problems, including foot and joint disease, and tuberculosis.”

While voters and The Oregonian editorial board understood the tax levy was to improve conditions for the resident elephants, the main purpose seems to have been something else.

A 2012 Willamette Week story said “zoo officials have quietly made a dramatic change in strategy: Rather than simply give the elephants a second home, the zoo wants to buy a second herd and begin a new, aggressive breeding program,” according to zoo documents reviewed by Willamette Week.

“The zoo now plans to more than double its elephant population in the next decade—from eight elephants to as many as 19—and keep a second herd at the offsite reserve,” the story continued. “The Oregon Zoo is doubling down on its elephant-breeding program even as other zoos from Detroit to San Francisco cease to keep elephants at all, and controversy grows about how the animals are kept in captivity.” ▶

Locally - Owned Eye Care Clinic and Optical Offering Attentive Eye Exams and Premium Optical Products Suiting Your Unique Lifestyle

LET US ENHANCE YOUR LIFE WITH OUR PERSONALIZED EYE CARE



**Uptown EyeCare & Optical, P.C.**

Uptown EyeCare & Optical  
2370 W Burnside St.  
503 228 3838  
uptowneyecareandoptical.com



**MAILBOX RENTALS - UPS - US MAIL - FEDEX**

**POSTALANNEX+**  
Your Home Office.

Uptown Shopping Center  
on Burnside  
25 NW 23rd Place, Ste. 6

**503-228-8393**

**\$3 OFF**

**ANY UPS OR FEDEX SHIPMENT**

With this ad.

Not valid with any other offer, one ad per customer per visit.

Expires February 28, 2014.

**STAMPS - BOXES - GREETING CARDS - COPIES - FAX - NOTARY**



# Boredom leads to aggression in zoo elephants

Confined in a small space with very few, if any, social partners and minimal or no autonomy over their lives, zoo elephants have very little to do each day.



Packy paces in his cramped quarters. He suffers from apparent anxiety-related behavior patterns, such as perpetual head bobbing.

## ZOOCHECK CANADA

Being intelligent animals, they become bored. Boredom itself leads to a variety of behavioral problems including heightened aggression, in some cases, and neurotic or stereotypic behavior, such as rocking back and forth, swaying from side to side or bobbing the head up and down. Some elephants are known to pull repeatedly on their own nipples until they are abnormally elongated; others chew on the ears of other elephants, until physical damage is caused. Some elephants become lethargic, standing in one location, leaning on walls, trunk draped on the ground, a mode of behavior that is highly unnatural and problematic.

If there isn't enough space for a social group to act normally, then elephants can't learn properly either. Much of elephant behavior is learned through watching others and through experience. Lack of social learning may well account for the high rates of abnormal mothering behavior, maternal rejection and infanticide in captivity. ■

*From website of Zoocheck Canada, a national animal protection charity established to protect wildlife in captivity and in the wild.*

**Tom Leach Roofing**  
45 years roofing  
your neighborhood.  
**503-238-0303**  
TomLeachRoofing@Comcast.net

CCB# 42219

## EVERGREEN FAIR TRADE

Home Furnishings • Toys • Jewelry • Fashion Accessories

826 NW 23rd Avenue  
between Kearney & Johnson

(503) 206-6289

www.evergreenfairtrade.com



Hours: Tues.-Sat., 11-7pm; Sun. 11-6pm

## LP LEGACY PRESERVATION LAW

ESTATE PLANNING • WILLS • TRUSTS • PROBATE



Preserving your legacy.

Call today to schedule  
your free consultation.

**503-224-6611**

www.LegacyPreservationLaw.com

James D. McVittie, Attorney-at-Law  
Licensed in Oregon and Washington  
1841 NW 23rd Ave Portland, OR 97210

## MARSHALL UNION MANOR

RETIREMENT LIVING FOR SENIORS 62 YEARS OR OLDER



Marshall Union Manor has been part of Northwest Portland for more than 40 years. Our residents enjoy the ease and diversity of urban living. For residents with cars we have off street parking, but many of our seniors prefer to utilize the city bus or the street car which stops just outside our building. We offer a dining room, beauty/barber shop, community vegetable garden, in-house library, and numerous clubs and activities. Enjoy Retirement to its fullest!

AFFORDABLE QUALITY RETIREMENT LIVING  
STUDIO: \$497 • ONE-BEDROOM: \$598

NO COSTLY BUY-INS OR APPLICATION FEES  
RENT SUBSIDIES AVAILABLE/INCOME LIMITS APPLY

2020 NW NORTHRUP STREET  
PORTLAND, OREGON 97209

503.225.0677

WWW.THEUNIONMANORS.ORG

ENJOY THE CONVENIENCE OF SENIOR LIVING!

OFFICE HOURS:

WEEKDAYS 10:00AM - 4:00PM  
APPOINTMENTS GLADLY SCHEDULED!

## Scuola Italiana di Portland

- Italian Language & Culture Immersion -

- \*Reggio Emilia Preschool - NW
- \*After-School Programs
- \*Weekend Classes
- \*Evening Classes - adult
- \*Free Mommy & Me Playgroup
- \*Summer Programs

Native & native-fluent instructors guide students toward a deeper knowledge of Italian language and culture in an engaging, dynamic, student-centered environment.

info@scuola.us • (971) 270-0470 •  
www.scuola.us

Providing authentic Italian language & culture education since 2006



convenient location... new name!

**NW Mortgage Group**

same

**Jim Lowenstein**

Branch Manager / Sr. Loan Officer | NMLS-57654

**Gary Boyer**

Certified Mortgage Planner | NMLS-57785 | MLO-57785

**Ariel Gunderson**

Senior Loan Officer | NMLS-57796 | MLO-57796

**Bill Dolan**

Loan Officer | NMLS-252823

**Jessica Fritts**

Loan Officer | NMLS-502139

**Jillian Shea**

Loan Officer | NMLS-83925 | MLO-83925

**Jessica Ford**



www.nwmortgagegroup.com | 503.243.2674 | 1.800.595.7280



## Letters continued from page 3

### Digital O disappointing

In your December editorial, you said that three days a week, "I must resort to reading the online facsimile version." No you don't. There is a hard-copy newspaper out there; you just have to go out and get it and pay an extra \$1 for it each time. What three of us have done at my moorage—where the nearest Oregonian for sale is in Linnton, a 10-mile round trip—is divvy up the three days and each of us one day a week picks up three papers and delivers them to the others.

The changes are especially annoying for a number of reasons:

- Sometimes our moorage neighbor delivery person doesn't bring a paper by till 10 at night, when he or she finally gets back from town.

- No effort was made by The Oregonian—as they said they would do when I wrote at the first bit of information that this was going to happen—to have more sale sites closer to people. People here asked, but the little store on Sauvie Island ("only" a 6-mile round trip from here) still doesn't carry them.

- Those of us who have absolutely no interest in the digital version end up paying \$3 a week extra for the same paper we used to get

seven days (not counting the gas and time to pick them up). We don't get any discount for never looking at the digital version.

- I also love letters to the editor, but I find I don't bother reading any of them that come online because they don't make people identify themselves. To me, all anonymous letters are invalid.

- When we had a big gas explosion on the island recently, it was all over the TV news but didn't even make it into the oh-so-thin newspaper.

I grew up outside Pittsburgh with two newspapers a day. This is all sad and frustrating.

*Donna Matrazzo  
NW Ferry Rd.*

It is unbelievable to me what has happened to The Oregonian. In essence, Portland no longer has a daily newspaper. The print versions delivered four days a week have very little in the way of important news. The digital versions are not worth the effort reading.

Where are the voices of outrage over this? Henry Pittock must be writhing in his grave. As is Don Sterling.

*Rosalie Tank  
SW Clifton St.*

### Local Choice closure

Regarding the Local Choice Produce Market closure [December 2012]: It's a matter of Marketing 101—find a need and fulfill it.

Creating a concept without determining a need is the way to go out of business.

*Dan Bigelow  
NW 130th Ave.*

### Micro apartments

The proper approach is to think of micro apartments as an experiment. The city should test one or two before they are given approval to be built all over Portland.

Also, I suspect they are better suited in some parts of the city than others. My biggest fear is that if the buildings aren't located in the city's central core, where destinations are in easy walking distance or in easy reach of public transportation, the tenants will want to have their own automobiles. And adding a large number of automobiles to an existing neighborhood with limited street parking is a sure way to destroy its livability for everyone.

*A. Scott  
NW Quimby St.*

## Rental of MAC facilities by outside groups at issue

BY ALLAN CLASSEN

Last November, former Multnomah Athletic Club president Lew Delo sent a two-page letter claiming our October 2013 cover story, "MAC Attack: A costly war over free parking," was "incorrect, misleading and biased."

The letter raised so many broad issues, we have divided it into three parts for publication and response.

Delo wrote: "You are also incorrect that 'they [club and private social events and functions] are not a core function of the club [and] were not accounted for when the club was granted a conditional-use permit. ..."

The Examiner story referred to private events in which outside groups rent MAC space and services. These may be weddings, company banquets or conferences. The club does not organize, control or sponsor these events, and they are not for the club's general membership. A private entity pays for specified services just as someone might rent a church for a wedding or meeting.

Delo implies such events are part of the club's core function because they may involve athletic or social activity. He makes no distinction between club sponsored activities and events for hire. He thus sidesteps a growing complaint by MAC neighbors: Private events have expanded greatly in recent years, bringing with them a unique parking burden. Many are held at prime times when use of the club by members is also at a peak. When this happens, members may find no room to park in the main garage.

The point made in our coverage is that this is a self-inflicted parking crisis. The club could avoid it entirely by hosting fewer outside events or scheduling them to avoid busy times. ■

FRIENDS AND NEIGHBORS

*Please visit participating restaurants*

THAT SUPPORT DINING NIGHTS

just look for our sign



YOUR GENEROUS DONATIONS GO TO SUPPORT KIDS, TEACHERS, CLASS SUPPLIES, MUSIC, & ART.

CHAPMAN ELEMENTARY

*upcoming school events:*

FEB 11 — KINDERGARTEN ROUNDUP  
INFORMATIONAL MEETING  
FEB 17 — NO SCHOOL (HOLIDAY)  
FEB 19 — LATE OPENING (10 AM)

PLEASE VISIT FRIENDSOFCAPMAN.COM

**NORTHLAKE**  
PHYSICAL THERAPY & REHABILITATION  
*A center for healing, fitness, and injury prevention.*



*Physical Therapy  
Personal Training/Coaching  
Massage Therapy*

Providing a mindful approach towards recovery, strength and balance.

Serving the athlete and the family for over 25 years

For an appointment call  
**503-222-4640**

**New Pearl District location**  
in Raleigh Square  
1622 NW 15th Avenue  
www.northlakephysicaltherapy.com







In 2000, the USDA formally charged the Oregon Zoo with violating the Animal Welfare Act in the abuse of Rose-Tu, who had bullhook wounds all over her body.

Continued from page 6

Smith's response to those charges?

"We've always been very clear on our vision of breeding elephants," she told Willamette Week.

Courtney Scott and a band of about two dozen activists involved in Free the Oregon Zoo Elephants have been protesting at the zoo entrance and trying to raise broader issues about elephants in captivity since 2012. Their picket signs plead "retire Packy" and "elephants are suffering in zoos."

Last December, actress and elephant advocate Lilly Tomlin supported their campaign with a letter to Smith and Metro councilors (whose agency operates the zoo).

"I urge you to release the Oregon Zoo's oldest elephant, Packy, to an appropriate sanctuary. For 51 years, Packy has entertained the people of Oregon. Now it is time for him to retire to a sanctuary, where he can roam freely on many acres of land.

"The zoo is facing some serious problems that other zoos have also encountered with keeping elephants. Rama is infected with TB, and now Packy is being treated for it as well.

"Elephants in zoos also suffer from painful joint and foot disease. It is not their nature to stand on a hard surface all day and night. They need to move across huge expanses of grass and soft earth in order maintain their mental and physical health. Wild elephant expert Dr. Joyce Poole says that elephants who rock their heads back and forth, as Packy does, are suffering from extreme stress."

*"For 51 years, Packy has entertained the people of Oregon. Now it is time for him to retire to a sanctuary, where he can roam freely on many acres of land."*

**Lilly Tomlin**

Despite the celebrity support for their cause, Free the Oregon Zoo Elephants have found it difficult to hold media attention to their campaign. The organization hopes to persuade Metro to hold a hearing so they can more fully make their case, but so far, not one Metro councilor has taken their side.

Scott believes minds would change if people would devote some time to better understanding the issue. In her monthly visits to the zoo, she finds that

most visitors spend about five minutes looking at the elephants before moving on. All are drawn to the baby elephants, while the adult elephants are largely ignored.

"I suggest people go there and really look at them," she said. "Give it last least half an hour."

Those who do will see repetitive head bobbing, walking in circles, pushing at doors and other neurotic behavior not exhibited by elephants in the wild, she said.

Once, she saw a young girl brought to tears after watching Packy.

"She said, 'Mommy, that elephant is sad,'" Scott

recounted.

It's no wonder.

Packy has no place to go, no apparent access to females and his feet hurt.

In the wild, elephants may roam 30 miles in a day. In a zoo, they stand in one place so long the ground becomes hard as concrete and their feet break down under the weight of their 5-7 tons.

"They simply don't have space to live as a normal being," she said, noting that the 1.5 acres the zoo claims are devoted to its eight elephants includes visitor and staff space not accessible to the elephants.

"The psychological pain is the worst," said Scott. "The elephants are literally insane from boredom."

She characterized the promised "Elephant Lands" as "a puppy mill for elephants," a place to breed new baby elephants, which are guaranteed crowd pleasers—until they grow up.

Smith describes the proposed elephant reserve in Clackamas County, "a sweeping expansion of the current habitat specifically designed to meet the social, emotional and physical needs of

our elephants and further increase their welfare."

That doesn't mean that Packy and other ailing adult elephants in the Oregon Zoo will get there. In an interview with The Oregonian regarding Tomlin's letter, Smith was adamant that Packy will remain at the zoo.

The reason?

"We believe in family for our elephants," she said. "That social network is important to them. It's important to their social welfare."

Metro Councilor Sam Chase believes the Oregon Zoo has one of the best elephant programs in the country, and he doesn't put much stock in IDA reports to the contrary. His yardstick will be what happens to Packy.

"To me, the focus is, what is best for Packy?" he said. "Is Packy at the best place at the zoo, or is there another place where he'd be better off?"

To Smith, the issue is allegiance to the zoo's mission.

"We know that IDA and other anti-zoo activists will never agree with our mission," she said. "Our commitment, however, is not to them, but to the animals in our care and to the community that has supported us for the past 125 years." ■

## Packy has TB

Oregon Zoo officials say Packy has an active case of tuberculosis and cannot handle the recommended dose of the prescribed medicine. The drug affects his liver and has caused him to stop eating several times, The Oregonian reported last month. He and Rama, who also suffers from TB, are segregated from the rest of the herd to keep the infection from spreading.

A survey of 480 Asian and African elephants held in facilities regulated by the U.S. Department of Agriculture between 1994 and 2011 found 51 with TB, 45 of them the Asian elephant species that make up the Oregon Zoo's herd. ■



Exceptional Care - Unsurpassed Customer Service  
in the Heart of Portland



NORTHWEST  
NEIGHBORHOOD  
VETERINARY  
HOSPITAL

503-227-6047  
nwneighborhoodvet.com  
2680 NW Thurman Street  
Scott Shales, DVM • Carrie Fleming, DVM • Nick Gowing, DVM  
Meghan Hook, DVM • Becky Prull, DVM • Kimberly Mason, DVM



We are offering  
**20% off**  
dental procedures  
this January

## FOREST HEIGHTS VETERINARY CLINIC

On The Corner of Barnes and Miller  
Five minutes from NW 23rd

**(503) 291-1757**

**KEEP HIM HAPPY,  
KEEP HIM HEALTHY!!**

[www.forestheightsvet.com](http://www.forestheightsvet.com)

A full service hospital with a focus on  
comprehensive and proactive care.



# Metro grant program wrestles with boundary issues

Metro recently awarded \$72,000 in grants to 10 organizations to mitigate the impact of its waste transfer station off Northwest St. Helens Road.

Although the grant program is in its 20th year, controversies over geographic boundaries served by recipient organizations persist. One activist decries what he sees as about half of the money going to projects outside the intended target area.

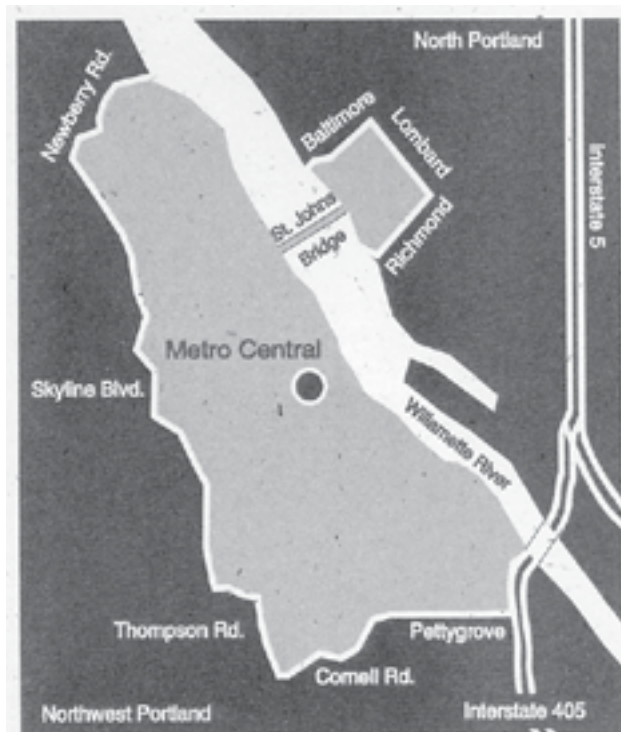
Les Blaize, a Forest Park Neighborhood Association representative on the Enhancement Committee most of the time since it was formed in 1993, has raised these issues before. His concerns were the focus of a June 2012 Northwest Examiner cover story, "Out of bounds?"

The boundaries form a rough arc around the transfer station and are almost exclusively in Northwest Portland. A small section extends across the river into North Portland's Cathedral Park. He is irked when programs with

a citywide mission or based miles beyond the boundaries get a share of the money.

He highlights portions of the official criteria to make his case:

- Projects/programs will be funded within the area specified.
- Only nonprofits are eligible.
- Projects/programs that best enhance or rehabilitate areas most severely impacted by the facility will receive priority consideration for approval.
- Priority will be given to projects/programs that best meet the goals and which offer benefits to areas directly impacted by facility.
- Results in projects that are within the boundaries and/or benefit youth, seniors, and low-income people within the boundaries.



Metro Enhancement Fund boundaries.

Heather Kent, who manages the grant program for Metro, said, "I have met with staff attorneys a couple of times, and the committee decisions are consistent with past practices and their interpretation of the Metro code."

Blaize challenged that response in an email to Metro Councilor Sam Chase.

"I agree that 'the committee decisions are consistent with past practices.' They have been consistently wrong and do not follow Chapter 5.06 as written by the original committee.

"Under Rex [Burkholder's] chairmanship, he allowed excessive diversions from the criteria. This was brought up by me at Rex's last meeting and was reflected in some of last year's grants. However, even those slight adjustments that started the movement back toward the criteria were not only ignored but championed by you in this year's grants.

"You took a very active part in the decision making this year, and it is obvious that our understandings of what Chapter 5.06 states do not match. My understanding is based on being on the original committee that wrote Chapter 5.06; yours appears to be based on a history of poor chairmanship that preceded you."

Chase is familiar with the rules, but in his mind, "These criteria aren't clear."

For one, benefits are hard to measure, and even a program operating within the boundaries may serve some who live outside the line.

Beyond that, he explained, the final grant decisions are made by a committee comprised of community representatives based within the boundaries. If they believe a program benefits their area, that's their call.

"I'm helping facilitate," he said, "but the group really sits down and decides." ▶

NOW AT BASCO  
**smeg**



MADE IN ITALY 50's RETRO STYLE REFRIGERATORS • RANGES • COOKTOPS • WALL OVENS • HOODS • DISHWASHERS



**BUILDER'S  
APPLIANCE SUPPLY COMPANY**

1411 NW Davis St.  
Portland, OR 97209  
503-226-9235

Hours: Mon-Fri 8am-5pm  
Sat 9am-5pm

**CHECK OUT BASCO'S  
NEW WEBSITE!**

bascoappliances.com



## Boundless Energy

The first thing to know about The Amico Group is this: we work for you. This means however long it takes to find the best buyer for your home, we'll see it through. If it takes forever and a day to find the right house in the right school district within walking distance of what you like to do, so be it. We love the hunt, welcome the challenge, and take great pride in coming through for you. Call us.

Joan Amico 503.802.6443  
Darrin Amico 503.802.6446

TheAmicoGroup.com  
The Hasson Company

the  
**Amico**  
real estate group



That said, Chase is organizing a workshop this spring to review the criteria and answer the question: "How could we improve the criteria to be more clear?"

Les Blaize disagreed with several of this year's grants:

2. "Outside of the area. Should not be funded. Limited number of people living in the boundaries."

5. The festival has received "over \$17,000 for non-sustainable grants" from the fund over the years. "A \$1,000 grant may be more in line."

6. "They ... list a couple of heavy duty partners that don't seem to be putting any money into the project. It appears that it is unbalanced toward North Portland and is out of the target area. I am trying to figure what our bang for the buck would be. I say no."



Les Blaize says much of the fund is being spent outside the boundaries.

7. "This grant is the same as it was last year and the year before. They talk about two houses in the target area. As far as I know, they haven't fixed any up but instead used the money for cleanups. We asked them last year to include with this year's request the addresses of the houses before they get the grant."

8. "We asked them last year [for] ... a breakdown on how many are in the target area. I don't think there are 75 students living under the St. Johns Bridge or 85 at Chapman inside the target area. They were warned and still didn't submit the information or verification."

9. Should not be funded "without verification [of clients served within boundaries]. We mentioned to them last year we would need verification." ■

## 2014 METRO ENHANCEMENT

| ORGANIZATION                                     | PROJECT  | FUNDING AWARD |
|--|--|---------------|
| 1. Forest Park Conservancy                       | Treating invasive weed species on 31 acres within the park and 10 acres of private property.   | \$20,000      |
| 2. Golden Harvester's Inc.                       | Installing a heating and air conditioning unit in their new location.  | \$6,200       |
| 3. Linnton Community Center                      | Regrading a steeply sloped, unsafe playground and adding a native shade tree and a children's butterfly garden with native plants.   | \$10,000      |
| 4. Northwest Industrial Neighborhood Association | Creating a linear park at the corner of Northwest Nicolai Street and Northwest Yeon Avenue.  | \$7,000       |
| 5. Portland Festival Symphony                    | Supporting a free classical music concert to be performed by the Oregon Symphony at Cathedral Park in July.  | \$6,000       |
| 6. Portland Harbor Community Advisory Group      | The Willamette Speaks: An oral history project capturing stories of community elders and others who fished, swam, played and worked on the river and sharing them at community events. | \$3,500       |
| 7. Building Together Portland                    | Repairing nonprofit-owned buildings or owner-occupied homes in the central district target area.   | \$3,500       |
| 8. Sauvie Island Center                          | Farm field trips for 160 third grade students from James John and Chapman Elementary schools.  | \$4,540       |
| 9. Store to Door                                 | A grocery and prescription drug delivery service for seniors and adults with disabilities.   | \$5,000       |
| 10. Tsuga  | Parks Learning and Community Enhancement summer camp in Cathedral Park serving youth ages 9 to 16.   | \$6,250       |

Dr. Rebecca Neborsky, MD

**Your doctor will see you now.**

- Integrative Primary Care for kids and adults
- Nutrition & healthy lifestyle counseling
- Teaching mind-body skills and stress management
- Coordinated care amongst specialists and holistic providers
- Reiki



**Baskin Clinic**

For more information:  
(503) 808-9211  
2222 NW Lovejoy St.  
Suite 406

- 24/7 ACCESS TO THE DOCTOR VIA PHONE, EMAIL, AND SAME DAY APPOINTMENTS
- LONGER APPOINTMENT TIMES
- NO COPAY OR DEDUCTIBLES FOR VISITS OR IN-OFFICE PROCEDURES

*In the office, at the hospital, or even in your home, we are there for you.*

**thimble**  
custom soft goods



We are a local soft goods workroom specializing in creating life altering draperies, valances, roman shades, bedding, cushions, pillows, shower curtains, slipcovers, dogbeds and whatever else your home, office, sailboat, treehouse, winnebago, or blimp may require. We recently opened a showroom in your neighborhood full of fabrics ranging from couture silks to commercial grade upholstery and everything in between. We are real Portlanders who love what we do and offer competitive pricing, so come check us out! Oh, and if you really do have a blimp, call us, because that's cool and we want to see it.

503.533.8372 | 1828 NW Overton | www.thimblepdx.com

**Hours:** Monday-Friday 10-5 Saturday 10-4 Sunday nap time



**Banking With a Community Partner**

When it comes to banking, you need a trusted partner. You need someone on your side.

With branch locations throughout Oregon and our state-of-the-art eServices, you can access your account wherever you are, on your own schedule. We provide service to nearly 100,000 members locally, nationally and worldwide.

When you join SELCO, you become a member-owner. And as an owner, you're entitled to great rates and great service. Stop by a branch, give us a call or visit us online to learn more about who we are and the many services we offer.

[selco.org](http://selco.org) / 800-445-4483



*Live a Good Life.*



\*Membership requirements apply. See SELCO for details.

Banking | Mortgages | Insurance | Retirement | Business Lending





# Choice Pearl

BY KATE WASHINGTON

## I chose the Pearl (but not why you think)

Choosing a neighborhood to live in is complicated. People pore over neighborhood statistics, school district data and home prices. They calculate commutes and consider the culture of the neighborhood and perhaps its proximity to important resources, such as nature, healthy food, public transit and sidewalks.

However, many people—dare I say most people—simply take the home and neighborhood they can afford, regardless of the other factors. The truth is, neighborhood choice is a luxury, and I must acknowledge this before I tell you the story of how I came to live in the Pearl District. Moving to the Pearl was the first time in my adult life I experienced the luxury of actually choosing where to live.

I moved to Portland in the summer of 2011, a year ahead of schedule. A casualty of the Great Recession, I had been unemployed for almost two years, and my husband was laid off from his civilian job in early 2011. His irregular work with the Air Force Reserves and my GI Bill stipend were our only income.

After a year of unemployment, I had returned to school to finish my degree (12 years after starting). I was pursuing a bachelor's in sociology, but I aspired to be an urban planner, which requires a master's. I knew I wanted to finish my degree at Portland State University, so when my husband's civilian job sud-

denly ended, we took that as a sign and started packing.

All my previous house hunting had been guided by the bottom line: rent. The Pearl District, loaded with resources, would never have been near the top of my list—except that I have a sister who lives here. She suggested we look into the neighborhood's low-income housing options. To me, the words "affordable" and "Pearl District" seemed at odds, but we put our names on the waiting lists and—long story short—we qualified.

Moving required significant sacrifices. It involved a longer commute to McChord Air Force Base for my husband and for me, further delaying my degree. I would not apply for PSU's master's in urban and regional planning (MURP) degree for another year, and there was no way to know it would all pay off.

So I devised a plan.

In my sociology classes, I was introduced to the book "Bowling Alone," by Robert Putnam, and the concept of "social capital," which Putnam describes as "social networks, norms of reciprocity, mutual assistance and trustworthiness." It's the people we know and the

*"I wanted to learn about urban planning while living in a neighborhood heralded internationally for its urban design."*

opportunities our networks provide us. Social capital is dependent upon one's socioeconomic position, which is created by one's opportunities of geography (resources available within a person's neighborhood).

Headed to a new neighborhood, I intended to maximize my brand new social capital for a very specific purpose: to network with people who could help me get into the MURP. Yes, friends, after spinning my wheels through most of my 20s, people now use words like "methodical" and "planner" to describe me.

I think it's safe to say that if you want to network with people who get stuff done, your neighborhood association should be your first stop. It was mine, anyway. Portland is unique in that the city has empowered neighborhood associations to make important decisions about what happens within their boundaries and that is not a tool to take lightly.

I had some hesitation about being a low-income neighbor, but I am happy to report that I was warmly welcomed. They even offered a chairmanship of the then-defunct communications committee. Did I know what I was doing? Not exactly. But I did possess a useful skillset from my earlier years as a graphic designer. I also had some free time while I jumped through PSU's residency hoops.

With a little over a year before the MURP application deadline, I did not pussyfoot about my expectations. I told them upfront I needed letters of recommendation for my application. Therefore, if I wasn't performing in a way that earned their support, all I needed was a little feedback and we'd all have what we wanted. They were very responsive to this approach, and in March 2012, PSU accepted me into the MURP program.

The more I learned and participated, the more I appreciated this neighborhood I once wasn't sure had a place for me. I wrote a paper about the Pearl's demographics that was used for supporting testimony at the city level. I presented about Portland's neighborhood associations to a group of Japanese students and started a neighborhood newsletter called

The Compass. I am currently working on a narrative about The Ramona, the central city's first low-income, family-oriented residential development.

My purpose in moving to the Pearl District was calculated. I wanted to live where I could increase my social capital, and I wanted to learn about urban planning while living in a neighborhood heralded internationally for its urban design. The good news is that I found I had something to offer my home in return: my time, my talents and my friendship.

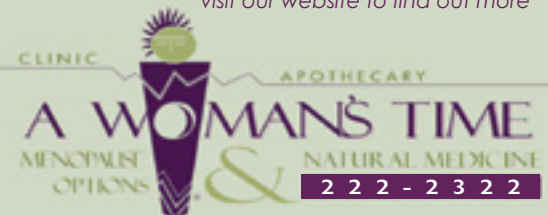
Why did you move to your particular neighborhood? How has it changed your life? What keeps you there?

The story of your life might be found in your answers. ■

### Women's Health Care

NEW LOCAL LECTURE STARTING SOON

Call our office or  
visit our website to find out more



### Women's Health

Bio Identical Hormones • Acupuncture  
Intergrated Herbal & Nutritional Therapies  
Breast Cancer Care • Massage  
Menopause • Annual Exams  
Counseling-Individual & Couples

Tori Hudson, N.D.  
Kellie Raydon, N.D., L.Ac.  
Aarin Meager-Benson, N.D.  
Tammy Ashney, N.D.  
Liz Davidson, N.D.  
Abigail Aiyepola, N.D.  
Michelle Cameron, N.D.  
Karen Hudson, CHHC  
Theresa Baisley, L.M.T.

503-222-2322

2067 NW Lovejoy • Portland  
www.awomanstime.com

**Apple Music**  
the fine art of guitars

Eric Skye playing a Santa Cruz Guitar

225 SW First • 503-226-0036 • applemusicRow.com  
locally owned for 37 years

**Attic Gallery**  
And Custom Frame Shop

206 S.W. First Ave. | 503-228-7830 | atticgallery.com  
Rotating monthly exhibits | First Thursday Receptions



# Five-Year Action Plan Proposed

Old Town/Chinatown Community Association leaders are advancing a five-year action plan they hope will spur investment and change public perception that their neighborhood is crime ridden and unsafe.

BY JOLEEN JENSEN-CLASSEN

The plan has the backing of Mayor Charlie Hales, who called redirecting the Portland Development Com-

mission to "the place-making business," with an eye toward Old Town and the Central Eastside Industrial Area, one of his top three priorities for 2014.

The plan, developed in concert with the Portland Development Commission, has three main objectives:

- Promote investment in key properties and improve district connectivity.
- Promote neighborhood business vitality.
- Build capacity for district management.

The plan will be discussed at a general membership meeting Wednesday, Feb. 5, 11:30 a.m.-1 p.m., at 70 NW Couch St.

A concentration of affordable housing (defined as

servicing those with 60 percent or less of the median family income) to the exclusion of moderate income or workforce housing (for those earning 60-120 percent of the median family income) discourages private investment, said board member and developer David Gold.

"Portland is in the midst of the biggest apartment building boom in its history," said Gold. "Apartments are being built in every neighborhood but Old Town/Chinatown.

"Developers cannot make money building moderate-income housing because people will not pay the necessary price to live in a neighborhood that is perceived as unsafe."

One idea to spur private development is to waive system development services for new construction in Old Town/Chinatown for a period of five years. PDC staff labeled that proposal "challenging."

*Julie Lawrence*  
YOGA CENTER  
SINCE 1976  
Best of 2012

Iyengar Yoga Center of Portland  
Find Your Center  
1020 SW Taylor Street, Suite 780  
503.227.5524  
www.jlyc.com

Katayama Framing  
30 years dedicated to handcrafted  
30 years dedicated to NW Portland

2219 NW Raleigh  
www.katayamaframing.com

**LOOK/SEE**

**FRAME LENSES & CASE INCLUDED** STARTING AT **\$99**

LOCATED AT 539 NW 13TH AVENUE  
JUST ABOVE BARISTA (2ND FLOOR)

Meet Tony & Jill - this can be you!



"You get individual attention, group encouragement, and a lot of laughter at Aleda. I was surprised at how motivating a great workout can be. It's a great way to start my day and the fact that my husband joined as well is a huge accomplishment!"  
-Jill Daniels

Try a gym experience you'll love!  
Try us for 21-Days for \$99!



(503) 906-4144 | 2321 NW Thurman St. | www.aledafitness.com



# Old Town history interwoven with Erickson's



The storied Erickson's Saloon building is about to get a new use—housing. Photo by Donald R. Nelson



August J. Erickson

A nonprofit housing developer announced plans last year to turn the historic Erickson Saloon Building and the Fritz Hotel along West Burnside into 62 apartments.

BY DONALD R. NELSON

The developer, Innovative Housing, is well aware that it is buying into a rich history.

Erickson's Saloon, also known at various times as Erickson's Café and Concert Hall, and Erickson's Workingman's Club, was opened by August J. Erickson in the late 1880s. He sold it in 1906.

Within a year or two, Fred Fritz and James J. Russell became the proprietors. In December 1912, the frame structure suffered serious fire damage. The next day, business went on as usual, although patrons had to stand in water to belly up to the bar.

Fritz and Russell seized the opportunity not only to repair but also expand their operation. Four months later, they obtained leases on one lot facing Northwest Third and two lots facing Second, some of which had been occupied by the original Erickson's.

"In the heart of the block bounded by Second, Third, Burnside and Couch streets, a great reinforced amusement house, saloon and billiard hall is to be erected as a result of leases recently negotiated," reported the Evening Telegram.

On the other side of the block, the Fritz Building was constructed out of yellow brick and was to be a movie theatre. The structure has been known by several names, including Erickson's Hotel and the Fritz Hotel. The Skidmore\Old Town Historic District historic document described the Fritz Hotel is a "through-block" building (connecting to Erickson's Saloon).



A 1902 drawing from an advertisement in The Oregonian.

When the new entertainment hall opened in 1913, the Morning Oregonian reported that "many of the best-known ladies in the neighborhood attended, some striking effects being attained in diaphanous gowns."

"A popular time was had by all present," the story continued. "Many after-

wards who did not care to walk returned to their homes in taxicabs."

Police were present. Additional entertainment was provided by bouncers who disposed of "patrons not considered eligible in the main refreshment parlor below the grill. Their dexterity was much admired."

Fred Fritz told patrons: "No rough-house stuff was permitted, the first person who roughhoused would be put off the floor."

A program issued that night touted the "largest bar in the world lined with the working giants of the woods taking their glass of beer and telling tales of

the forest, while the jolly tar fresh from the ship was spinning yarns of the deep

blue sea."

In 1915, Oregon voted in Prohibition to begin four years before the national banning of alcohol. Many saloons and taverns closed. Fritz announced that he planned to convert his business into a big clubhouse for men and would serve soft drinks.

Fritz died in 1921. His son, also named Fred, continued to operate Erickson's Workingman's Club. The younger Fritz sold it in 1961. Erickson's closed in 1981.

A later occupant of the building, the Portland Advertising Museum, moved out in 1994. Several nightclubs occupied the structure into the 2000s. ■



Erickson's bar, circa 1900, was touted as the longest in the world.



# August Erickson tested limits in Portland's 'Bad Lands'

BY DONALD R. NELSON

Who was August Erickson?



A flowered parade car passes the Erickson Building circa 1929. From Donald R. Nelson collection.

August J. Erickson operated a saloon at Northwest Second and Burnside from about 1889 until 1906. It grew to cover part of the lower floor of several wood-frame buildings on Burnside between Second and Third avenues.

He did nothing halfway. His saloon was devoted to liquid entertainment and gambling and was referred to at times as a brothel. Stories about his establishment and the 600-plus-foot bar, which wrapped around its interior, have been told ever since his death 90 years ago. It was said to be the largest saloon west of Chicago.

His backstory, relayed at the time of his death in 1925, was that he was from Finland, jumped ship in Astoria in the 1880s, worked in a bar and, in the next decade, started his own saloon, The Louvre.

Erickson opened an establishment in Southwest Portland around 1888 and soon moved the business to Second and West Burnside. Known worldwide to sailors and loggers, its reputation for revelry and gaming put it in good company with other establishments in the vicinity, an area referred to in local papers as the "Bad Lands."

Erickson and competitor Fred Fritz were arrested repeatedly for the gambling permitted on their premises, usually getting off with fines. Mayor George H Williams was OK with that form of punishment.

In 1897, a newspaper reported Erickson repairing, sprucing up and adding a family entrance on Second Avenue, apparently striving to upgrade its image.

Erickson pushed limits. When he had the sidewalk in front of his saloon repaired, he had his name stamped in the concrete. That was a violation of a city ordinance, and he was given a \$50 fine by Municipal Judge Hogue. Erickson's attorney made rumblings about testing the ruling before the Circuit Court.

"City Attorney Fitzgerald says that

if Erickson can stamp his name in the cement sidewalk in front of his saloon, there is nothing to prevent 'Bisque Babe,' a Bad Lands character, from stamping her name in front of her crib," reported the 1903 Evening Telegram. "He is confident that the Circuit Court will uphold the judgment of the lower court."

In the early 1900s, a Ladies Orchestra played at Erickson's Café and Concert Hall. It was said that they were protected from potential inebriated suitors by an electrified railing.

When evangelist J. Wilbur Chapman led a lengthy crusade in Portland in 1905, Erickson's concert hall was a venue for one of the meetings. Men and women

came to the event and were served beer with their meals before the meeting began. The main floor was packed with men. After music and the message, Rev. Snyder offered a prayer for Erickson, his bartenders and the audience.

Later that year, Erickson gave up his legal fight to keep his saloon open between the hours of 1 and 5 a.m.

In 1906, he sold his place, which eventually landed in the hands of the Fritz family a year or so later. ■



## Integrative Trauma Treatment Center

ITTC offers **massage, acupuncture, psychotherapy & medication management** with an elevated sense of awareness, compassion, sensitivity & skill.

- First Responders, humanitarian aid workers, healthcare providers & Vicarious Trauma
- Motor Vehicle Accidents
- Crime Victims
- Childhood Trauma
- Sexual & domestic abuse
- Pregnancy/Birth Trauma, pregnancy loss, death of a child, complex bereavement
- Dissociative Disorders
- Mood Disorders, Adult ADHD

Call the front office for an appointment:

**971.266.6910**

[traumacenternw.com](http://traumacenternw.com)

LOCATIONS IN NW PORTLAND & VANCOUVER, WA

The new **WEEKEND BRUNCH** darling  
of Northwest's upper alphabet



## RAE'S Lakeview Lounge

27th & Upshur • Northwest Portland • 503 719-6494

**ONE YEAR OLD and counting**  
OPEN DAILY Until Midnight 7 DAYS A WEEK

**No Reservations. No Lake.**

[www.raesportland.com](http://www.raesportland.com)



# Dining Guide

Eating is a sensual pleasure, and there is only so much that can be communicated in words. With that in mind, the Examiner presents a visual sampling of dishes featured at neighborhood restaurants. Participating establishments are advertisers or have paid to be included in this guide.

## Industrial Cafe



Western Bacon Burger: 100 percent-grass-fed beef raised on their family ranch in St. Helens. Comes with house-made BBQ sauce, Tillamook cheddar cheese, bacon and fried onions.

\$11.50

## Rae's Lakeview Lounge



Three eggs baked with house béchamel and pancetta ham, topped with seared Gruyère cheese. Served with roasted potatoes.

\$8

## Ringside



Bone-in Ribeye Steak with roasted red pepper garlic and cilantro butter.

\$59

## Marrakesh



B'stilla Royale: phillo dough filled with pieces of chicken and Moroccan scrambled eggs, crushed almonds baked in butter, powdered sugar and cinnamon.

\$6.95

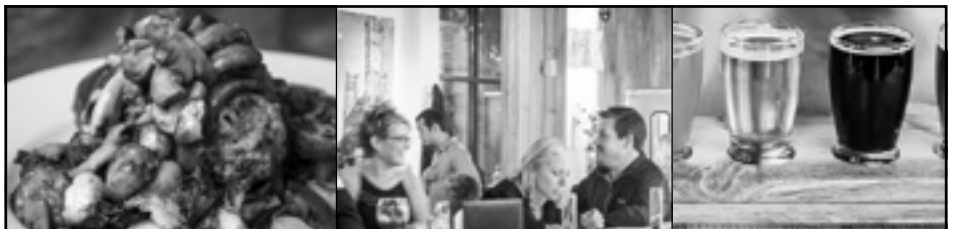
## FROM FARM-TO-TABLE



503.228.1250  
www.meriwethersnw.com  
2601 N.W. Vaughn Street  
Portland, Oregon

Meriwether's  
Restaurant & Skyline Farm

Serving 7 Days A Week  
Lunch • Dinner • Brunch  
Private Events • Happy Hour



Open 7 days a week  
with full menu TO GO

Brunch on Saturdays and Sundays  
Use this ad for \$5. off your next visit

streetcar  
BISTRO & TAPROOM

1101 NW Northrup | 503.227.2988 | www.streetcarbistro.com  
Hours: 11am - midnight 7 days Happy Hour: 3pm - 6pm & 9pm - midnight 7 days!



# NOBBY NEWS

Vol. 20, No. 4

"News You Can't Always Believe"

February, 2014

## TIMING IS EVERYTHING



When Ron and Kevin decided to try out for the Olympics in Russia, there was no stopping them. The two Nob Hill Bar & Grill regulars began practicing in a friend's backyard hot tub, broken heater and all. "Toughens us up," says Ron. They designed a modern synchronized swimming routine. "My hip hop moves are legendary," adds Ron, "and I look really cool in swim goggles," chimes in Kevin. It was only after they got to Sochi, Russia, they discovered synchronized swimming was a summer Olympic event. Nobby's has started a fund to pay for their return tickets, but donations have been slow. In fact, there have been none. "I hear Sochi is nice this time of year," says Gabe the bartender. Undaunted, the boys observed the curling teams practicing. "I have a broom," realized Kevin. "We'll clean up on medals," thought Ron. This may not be the last we've heard from "Team Nobby's."

**BURGER  
COUNT  
803,998**

Enter your name for a monthly drawing.  
This month's winner is **Jim Gaffi**.

**Nob Hill Bar & Grill**  
937 NW 23rd Avenue • 503-274-9616

### McMenamin



Reuben sandwich with corned beef, Swiss cheese, sauerkraut, Russian dressing and grilled rustic rye bread.

\$11.25

### Kingston



The King's Ton: two 1/3-pound burger patties with turkey, bacon and an egg. Served with steak fries.

\$10.25

### Beau Thai



Signature Salad Rolls, vegetable rolls with choice of chicken, tofu or shrimp.

\$6.95



**BREAKFAST SERVED ALL DAY**

- Starting Sunday Feb. 9th Texas Hold'Em
- Tuesday Feb. 4th Trivia
- Every Sunday All you can eat Spaghetti Dinner

**PORTLAND'S  
BEST  
SPORTS BAR**

**CALL ABOUT TIMES.**  
Come in and see our new menu.

**THE TIMBERS START THIS MONTH.**

2021 SW Morrison St. | 503-224-2115 | Next to Jeld-Wen Field  
kingstonsportsbar.com  
Serving Breakfast - Lunch - Dinner | Open 7am - 2:30am

## February IS HEART HEALTH MONTH



Seafood is a nutrient dense protein and one of the highest sources for heart healthy Omega-3 Fatty Acids.

**Food Front**  
COOPERATIVE GROCERY

**10% OFF SEAFOOD  
FEB 19TH-25TH**

**Northwest Neighborhood**  
2375 NW Thurman St 8am-10pm

**Hillsdale Shopping Center**  
6344 SW Capitol Hwy 8am-9pm

EAT COLORFULLY LIVE VIBRANTLY | [FoodFront.coop](http://FoodFront.coop)

Fine pub food and excellent handcrafted ales & lagers.

*Cheers!*

1620 NW 23rd • 503 894-9374

Monday-Thursday 11am-1am  
Friday-Saturday 11am-2am  
Sunday 11am-12pm

[www.lompocbrewing.com](http://www.lompocbrewing.com)



**TAVERN**



# Dining Guide



## RANCH to TABLE

100% grass-fed beef raised on our family ranch



Serving Breakfast  
8 a.m.-11 a.m. Monday-Friday  
8 a.m.-3 p.m. Saturday & Sunday

Serving Lunch & Dinner  
11 a.m.-9 p.m. Monday-Friday

2572 NW Vaughn Street  
503-227-7002



## The Fireside

Seared rainbow trout, served with roasted sunchokes and a Meyer lemon salsa verde.

\$19



## Lompoc

The Tavern Burger is hand-pressed, locally sourced, all-natural beef burger with Pearl Bakery brioche bun.

\$9



SERVING DINNER  
5 NIGHTS  
A WEEK

tuesday-saturday  
5pm-10pm

2301 NW Saver st. Portland, Oregon 97210 | 503.228.2619 | www.besaus.com



## Streetcar Bistro

Bacon-wrapped meatloaf made from Zenner Farms ground pork, locally raised ground chuck, foraged mushrooms, house-made demi-glaze, vegetables and roasted potatoes.

\$16



Best Happy Hour  
in Town Since 1944!

The Crème De La Crème  
of Happy Hour Menus

Featuring a Delicious  
Menu Starting at \$2.75

7 NIGHTS: 9:30-CLOSE • SUNDAY: 4PM-5:30PM

UPTOWN • N.W. 22nd & W. Burnside • 503-223-1513

www.RINGSIDESTEAKHOUSE.com



## Celebrate the Holidays at MCMENAMINS RAMS HEAD



You're invited to meet up here with friends after work, or how about for a holiday lunch or get-together over appetizers? Groups are welcome to gather in our back lounge and enjoy cocktails and other handcrafted drinks, as well as each other's company; just contact us to reserve the nook in your name.

(503) 221-0098

2282 N.W. Hoyt St. • Portland • mcmenamins.com



*Paragon*



Rack of lamb served with bread budding, braised chicories and tomato-mint chutney.

\$26

*Dick's Kitchen*



The Classic Burger made from 100 percent-grass-fed beef from Oregon's Carman Ranch.

\$7.25

*Café Nell*



A 24-hour braised lamb shank with organic vegetables, red wine, cream and papardelle pasta.

\$25

NOW SERVING COCKTAILS

# Le HAPPY

A CRÊPERIE RESTAURANT AND BAR  
1011 NW 16TH AVE USA • 503.226.1258  
@ LOVEJOY STREET

OPEN FOR DINNER  
MON - THUR 5PM-1AM  
FRI / SAT 6PM-2:30AM

www.lehappy.com

worldcupcoffee.com

## WORLD CUP COFFEE & TEA

free wi-fi

1005 West Burnside  
503-228-4651 x1234

1740 NW Glisan  
503-228-4162

*"Northwest Portland's Favorite Thai Restaurant"*

## Beau Thai

Vegetarian Dishes Our Specialty  
Try Our Fast Take Out Service

Monday - Friday 11am - 10pm  
Saturday 12pm - 10pm • Sunday 12pm - 9pm

730 NW 21st Ave • 503-223-2182  
WWW.BEAUTHAI.COM

**FEBRUARY EVENTS**

- 2.1 KELLS STOUT RELEASE PARTY
- 2.2 SUPERBOWL PARTY
- 2.14 VALENTINE'S DAY
- 2.15 ZWICKELMANIA

**LIVE MUSIC  
EVERY FRIDAY  
& SATURDAY**



210 NW 21ST AVE.  
503.719.7175  
KELLSBREW PUB.COM

## Marrakesh

Celebrating 24 years

Enjoy dining at this elegant, authentic Moroccan restaurant featuring our

### 5-Course Feast

Belly Dancing Wednesday-Sunday

Royal Banquet Room seats up to 90 people  
Open 7 nights a week 5-10 pm • Reservations recommended

1201 NW 21st Ave. at Northrup  
www.marrakeshportland.com • www.facebook.com/marrakesh portland  
503-248-9442





**STEVEN R. SMUCKER**  
ATTORNEY AT LAW  
THE JACKSON TOWER  
806 SW BROADWAY, SUITE 1200  
PORTLAND, OR 97205

telephone: 503-224-5077  
email: steve@portlandlawyer.com  
www.portlandlawyer.com

**Pilates & Gyrotonic®**



503.235.3556

circle studio

1231 NW 11th Ave. • Portland, OR 97209  
www.circlestudio.biz • info@circlestudio.biz

Architectural Design

- Residential and Commercial Projects -  
New Construction, Additions,  
Renovations, Accessory Dwelling Units

DDP Architecture, LLC

D. Dustin Posner  
Architect, AIA, CSI



p: 971.279.3760  
e: dustin@pdxarchitect.com

www.pdxarchitect.com

Community Concierge  
wants to be **Your Valentine!**



- housekeeping • shopping
- errands • pet sitting • yard work
- repairs • and more!

A program of Friendly House. Program revenue helps low-income older adults maintain their independence in their own home.  
www.communityconciiergepdx.com  
503.935.5280

**YOUR DREAM IS OUT THERE.  
GO GET IT. WE'LL PROTECT IT.**



**Mark T Niebur Agency**  
1409 SW Alder St  
Portland, OR 97205

503-246-7667  
mniebur@amfam.com



All your protection under one roof®

1-800-MY AMFAM AMFAM.COM

American Family Mutual Insurance Company and its Subsidiaries American Family Insurance Company  
Home Office - Madison, WI 53782 00011 000240 - 211

# Community Events

## Rotary speakers

Portland Pearl Rotary Club meets every Tuesday at 7:25 a.m., in the Ecotrust Building, 721 NW Ninth Ave., second floor. The public is invited. A \$10 charge includes breakfast. For information, contact Randy Vogt, vogt4me1@icloud.com or 503-228-9858. This month's programs are:

**Feb. 4:** "Rotary Wellness Day," Roger Meyer, Mary Ward, David Holland and Jim Bowman.

**Feb. 11:** John Loranger, owner of Pearl Audio Video.

**Feb. 18:** "Ten Years of Graphic Design at Powell's Books," Lenore Ooyevaar.

**Feb. 25:** "Mediation: Stories from the Trenches," Lisa Miller.

**March 4:** "The Gorillas of Angola," Linda Terhark.

## Guild's Lake Courts history

Dr. Tanya March will present a local history program on Guild's Lake Courts, a massive public housing development built during World War II. About 10,000 people lived there at its peak, before it closed in 1951. "My research focused on the childhood experiences," said March. The event will be held Wednesday, Feb. 5, 1:30-2:30 p.m., at Friendly House, 1737 NW 26th Ave. Admission is \$10 for Friendly House members, \$12 for nonmembers.

## Chocolate tasting

An hour-long tasting and chocolate education program by the operators of Cacao will be offered Thursday, Feb. 6, 1:30 p.m., at Friendly House, 1737 NW 26th Ave. Cacao, in downtown Portland, offers chocolates from around the world. The class costs \$30 for Friendly House members, \$35 for nonmembers.

## Joplin class

Scott Joplin, whose "Maple Leaf Rag" was the first million-selling ragtime composition, is the subject of a presentation by Gordon Neal Herman, Wednesday, Feb. 12, 1:30-2:30 p.m., at Friendly House, 1737 NW 26th Ave. The fee is \$10 for Friendly House members, \$12 for nonmembers.

## 'Dyed in the Wool'

Local author Joyce Lekas will discuss her novel, "Dyed in the Wool," which involves crime on Navajo land and traditional blankets, Monday, Feb. 24, 10 a.m. Participants will meet at Friendly House, 1737 NW 26th Ave., and walk to Twist for breakfast and discussion. The cost is \$7 for Friendly House members and \$9 for nonmembers. Pre-registration requested. Call 503-224-2640.

## Women's History Month

Friendly House celebrates Women's History Month with a talk about American artist Mary Cassatt, illustrated by her paintings. The program is presented by Bryna Campbell, an art historian and an expert in American art who teaches at Portland State University. The event is Wednesday, March 5, 1:30 p.m.,

at Friendly House, 1737 NW 26th Ave. The cost is \$10 for Friendly House members and \$12 for nonmembers. Pre-registration requested. Call 503-224-2640.

## Correction

In our January story about mural artist Larry Kangas, we incorrectly identified his assistant, Allison McClay, as his daughter. Kangas had described her as "someone who is like a daughter to me."

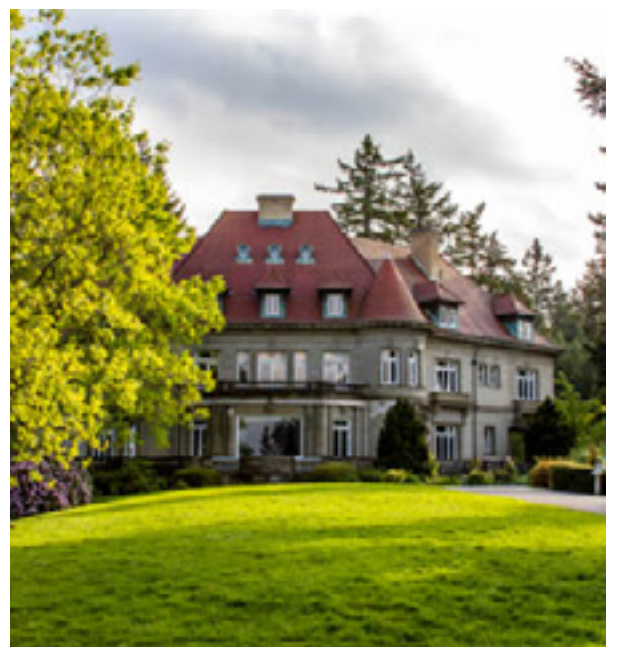
## Stories of Puerto Rico

Children's author Carmen T. Bernier-Grand shares folktales, stories, songs and dances from her native Puerto Rico Thursday, Feb. 6, 3-3:45 p.m., at the Northwest Library, 2300 NW Thurman St., 503.988.5560.



## Quilting workshop

A free quilting workshop begins Monday, Feb. 3, at Friendly House, 1737 NW 26th Ave. Sessions will be every Monday, 9:30-11 a.m., through the spring. Learn new skills, such as piecing and basic quilt planning and assembly, or hone rusty skills while making quilts for a good cause. Each participant will also create a project to take home. No fee or registration required. For information, contact Anna at annazee27@gmail.com or call 503-228-4391.



## Pittock Mansion

Pittock Mansion, 3229 NW Pittock Dr., offers free admission Feb. 1-10 in celebration of its 100th anniversary. Discover what life was like for Portland's early pioneer and entrepreneur, Henry Pittock, and his philanthropist wife, Georgiana. For information, visit pittockmansion.org.

## Preserving fruit

Oregon State University Extension Service presents an overview of canning, freezing, juicing and jamming Oregon's fresh fruits at the Northwest Library, 2300 NW Thurman St. Review basic techniques, necessary equipment, and up-to-date resources. The class is Sunday, Feb. 16, 2-3 p.m.

## Mosaic of Heroes

Volunteers are invited to help local artists who will be creating large sculptures to decorate Friendly House for its annual spring auction March 14. The work will be done weekends or evenings in February. No artistic skill needed. Children under 14 welcome with an adult. The theme is Friendly House: A Mosaic of Heroes. Contact Jim Waigand at volunteer@friendlyhouseinc.org or call 503-228-4391 to sign up.

Willamette Heights resident Gabrielle Ackerman is leading an effort for an indoor pool in Northwest Portland. She is asking neighborhood residents to take an online survey (sdrv.ms/1gMs5C4). She plans to present the results to city officials.



# Con-way developer updates plans



Architect's rendering of LL Hawkins Building, as seen from Northwest Quimby Street looking northeast.

The master developer for the Con-way area updated plans and fleshed out a controversial stance at last month's meeting of the Slabtown Community Association.

BY ALLAN CLASSEN

The meeting drew a standing room only crowd of about 60 people to the Dragonfly Coffee House.

Tom DiChiara, vice president of development for C.E. John Co., presented new images of proposed buildings, including a pencil sketch of the Leland James Center at 1621 NW 21st Ave. wrapped in a bold decorative element. The 1973 building that once housed more than 800 workers is now largely vacant, and its narrow vertical slits for windows make it undesirable for most uses. But DiChiara thinks it might work as a first-run movie theater, an attraction Northwest Portland has not had in generations.

Another idea he floated was of a 100-room boutique hotel.

DiChiara also illustrated possibilities for the former Consolidated Freightways truck service building at Northwest 21st and Pettygrove, which a city-adopted master plan designates for removal to make way for a public square and city park.

Before writing off the thick-walled concrete structure, DiChiara is asking the community to consider what could be done by transforming it for public purposes, such as recreation, a farmers market, an amphitheater and/or sunken

gardens.

He showed pictures of New York City's High Line, an abandoned elevated roadway that has been converted into a public walkway and park. The roof of the truck facility could become a unique elevated park with some of the same appeal, he suggested.

DiChiara lowered expectations for the volume and density of expected development. While the master plan projected 1,100-1,500 housing units for

the entire 17.5-acre master plan area, the latest thinking is for about 950-1,100 units.

Earlier projections for 421,000 square feet of office space may have been optimistic, he said, but the targeted 146,000 square feet of retail should be doable, given a New Seasons Market coming to 22nd and Raleigh as an anchor.

"We do expect to max out the retail allowance in the master plan, which we feel is critical to creating the active streetscape and true '20 minute neighborhood' called for in the master plan," he told the Examiner. "All of this of course is subject to how the market responds and how demand evolves over the next five to 10 years."

The day after DiChiara's presentation, the Northwest District Association Planning Committee confirmed its position that retaining the former truck garage would violate a master plan negotiated with the neighborhood and adopted by the city and should not be considered unless the result is clearly of greater benefit to the community.



**DIRECTORS.**  
Mortgage

Discover  
the difference Directors Mortgage makes

Looking to Purchase or Refinance?  
Call one of our Local Sr. Mortgage Specialists Today!

503.636.6000  
directorsmortgage.net

17 OFFICES  
LOCALLY OWNED

BBB A+ Rating

This is not a commitment to lend.  
Consumer Loan License  
NMLS-3240, CL-3240

Albina Community Bank

Where you bank matters!

Creative and personalized banking solutions to help you achieve your financial goals - and support your local community at the same time!

Social Impact Banking Office (Pearl District) • 430 NW 10th Ave • 503-445-2150  
www.albinabank.com

Member FDIC  
Equal Opportunity Lender  
Equal Housing Lender



## Oregonian editor says bosses tell him 'push digital'

Oregonian Editor Peter Bhatia spoke to the Portland Pearl Rotary last month about the paper's future in the digital age.

BY ALLAN CLASSEN

His speech was entitled, "Death of print or life of online journalism?" and it was clear on which side of the divide the audience of about 55 Rotarians fell. Before taking the lectern, he was serenaded to several verses of "I miss you most of all," a parody bemoaning the decline of the daily newspaper in America.

Bhatia was clear that he too loved printed newspapers, which have been his life's work.

"Print is still viable," he said. "Print advertising still works. ... But our opportunity for growth is in digital."

In terms of page views, he said online readership already matches the printed version.

He expects the transition to online reading will only accelerate, and when baby boomers fade away, printed newspapers will too. He projected the online facsimile of The Oregonian—My Digital O—will be phased out in five or 10 years and presumably the printed version with it.

The Oregonian's corporate owners are telling him to aggressively "push digital," he said.

However, he said the paper's mission to "hold the powerful accountable" remains.

"Although politicians may want the paper to go away," Bhatia said newspapers—on paper or online—will continue to call for accountability.

"The basic values of journalism can't change," he said. "Accuracy is still paramount."

As for greater reliance on bloggers and "citizen journalists," Bhatia said these writers do not have the professional detachment required to cover the news.

Asked about the Statesman-Journal's recent announcement to add pages of content, he was skeptical. The Salem paper and others in the Gannett chain will include a national news supplement similar to USA Today. Although total news volume will increase, Bhatia worries that local coverage will be slighted in the process. ■

## Business Briefs

A nine-story office building with three levels of underground parking is proposed at Northwest 14th and Johnson streets. The spokesperson for developers **Walter Bowen, Dennis Parfitt and Barclay Grayson** is **Brian Owendoff**, the Forest Heights real estate broker who was fired by CB Richard Ellis in 2011 after his anonymous online attacks against public officials were exposed by the Northwest Examiner.

**Pearl Hardware**, 1621 NW Glisan St., is expanding to take over the adjacent space to the east, formerly occupied by **Nancy's Kitchen**.

**Road Runner Sports** opened in Uptown Shopping Center last month after many delays.

Ten years since beginning at Northwest 23rd and Johnson, **Tea Chai Té** opened its third Portland location on Southeast Hawthorne. The company serves 120 teas, blends and infusions in addition to a wholesale and private label business.

Siblings **Greg and Debbie Slawson** have acquired **Passport Immigration Photos** at 439 NW Broadway from Tamara and Andre Protassy, who founded the business 35 years ago.

Condo owners at the **Elizabeth Lofts** have settled a lawsuit with a plumbing supplier they said sold failing parts. Owners at the **Avenue Lofts**, the **Benson Tower** and **The Edge Lofts** are also suing Pennsylvania-based **Victaulic Co.** on similar charges.

**Rainier Pacific** demolished a triplex at 2653 NW Thurman St. and is replacing it with a 16-unit apartment building.

**Carolyn Ciolkosz** is the new executive director of the **Pearl District Business Association**.

**Tina Wysznski** is working to establish a new business association in Goose Hollow. One of its new projects will be a shoppers' guide map of the district. **The Goose Hollow Business Association** has existed on paper for years, but is inactive.

**St. Jack Restaurant** will open in the Benevento building at Northwest 23rd and Raleigh Feb. 14.

**Mary Peveto** of **Neighbors for Clean Air** will speak at a **Slabtown Community Association** meeting in March. Peveto, a Northwest Thurman Street resident, launched the organization in 2009 over concerns about industrial air pollution around Chapman School. NCA now has statewide impact on a variety of air quality issues.

The café at **Joe's Cellar**, 1332 NW 21st Ave., reopened last month. It's now open 7 a.m.-1 p.m. Thursday, Friday, Saturday and Sunday, and owner **Jim Hittner** said he may add more days as business picks up.

# We're as close as the end of your nose.



Open 7 days a week with extended hours!

UPTOWN  
35 NW 20th Place  
503-227-3719

WEST HILLS  
7535 SW Barnes Rd  
503-203-0018

FREE  
Office Visit &  
Consultation!\*



**Banfield**  
PET HOSPITAL

Banfield.com

\*First time clients only at listed hospitals



# New Businesses

## Glyph Café & Arts Space

804 NW Couch St.  
503-231-0303  
glyphpdx.com

Owners Hugo Moreno and Sandra Comstock recently opened Glyph Café & Arts Space in ArtHouse, the new Pacific Northwest College of Art student housing building on the North Park Blocks. The café's name refers to a mark that contributes to the meaning of a written form. "Our café expresses our mission of providing a crossroads where Portland's diverse visual and literary arts communities can meet to share ideas and projects," said Comstock. The menu features local cured meat, cheese and veggie boards, soups, sandwiches, salads and select single origin teas and pastries.



Hugo Moreno and Sandra Comstock

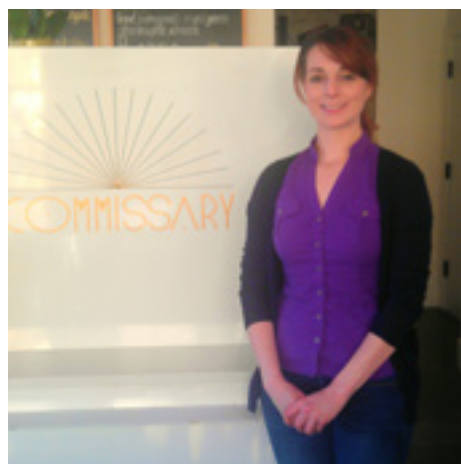
## Motorgroup LLC

1715 NW Pettygrove St.  
503-208-2298  
motorgroupllc.com

A luxury used auto dealership recently opened in a remodeled warehouse at Northwest 17th and Pettygrove. According to sales director Jeremy Rupp, the family owned and operated business specializes in the finest cars. The current inventory includes a 2011 Land Rover Sport, a 1993 Porsche 911 and a 1965 Volkswagen Beetle. Rupp said they will also track down rare models requested by customers.



Motorgroup showroom



Kim Wilson

## Commissary Café and Coffeehouse

915 NW 19th Ave., Suite 8  
971-888-5046  
commissarycafe.com

Chef/proprietor Kim Wilson, a graduate of Le Cordon Bleu Patisserie, recently opened Commissary Café in the historic Film Exchange building. Kim's culinary aim is creating simple, fresh seasonal food, including sandwiches, soups and pastries. It's open 7 a.m.-4 p.m. Monday through Saturday.



Mira Kwon

## Industrial Strength

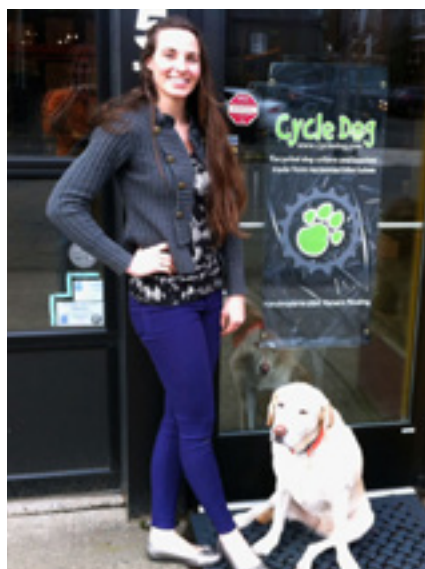
2034 NW 26th Ave.  
971-242-8471  
industrialstrengthgym.com

Industrial Strength, a fitness gym specializing in private coaching and classes, such as small strength and conditioning, Brazilian jiu jitsu, Kettleball and Olympic weightlifting, has opened in the industrial district. Co-founder/Head Coach Tony Gracia and his fiancée, Mira Kwon, say their mission is to provide a comprehensive approach to strength and conditioning matched with a community experience.

## Cycle Dog

2215 NW Quimby St.,  
503-481-6058  
cycledog.com

Paul and Lanette Fidrych have been manufacturing earth-friendly collars, leashes and other dog products from a Northwest Industrial Area warehouse since 2009. On Feb. 1, they go retail with a combined factory and showroom in part of the Monkey King space. Old bicycle inner tubes collected from shops around Portland are their primary raw material. "Our goal is to create the world's best dog products with a focus on the environment and to raise awareness of the millions of bike tubes thrown into landfills every year," said Lanette. The couple has lived near Wallace Park for 15 years.



Lanette Fidrych

## BiBi 2 Go

1019 NW 23rd Ave.  
971-242-8992  
bibbi2go.com

BiBi 2Go combines Korean dishes with Asian Fusion for takeout or in-house dining. Entrées include Bulgogi, a combination of BBQ beef and vegetables; Kimchi Jjigae, a kimchi stew and rice; and Bibimbap, consisting of rice, vegetables and an egg. Lunch boxes include pork or beef and rice, vegetables and miso soup. It's open Monday through Saturday, 11 a.m.-8 p.m.



Bibimbap

**SHLEIFER**  
MARKETING COMMUNICATIONS




"Thanks to Denny, we got top tier visibility for our new business in print, radio and television. Six months later, people still mention those articles and interviews!"  
- Linda and Sara Stimac / Firebrand Sports

**Get Busy, Call Me Today!**  
MENTION THIS AD FOR A NO OBLIGATION CONSULTATION  
Denny Shleifer: denny@shleifermarketing.com  
**503.894.9646**

**Change your life  
... No side effects**

First Consultation Free



James H. Nelson, PhD. CHt | 503-567-2481  
www.pacifichypno.com

**Kurilo General Contracting**

35 YEARS EXPERIENCE  
Commercial & Residential  
No job too small or too large

ph: 503-621-1162  
fx: 503-621-6993  
CCB # 151773

Mike Kurilo  
mkurilo@hughes.net





# NORTHWEST EXAMINER COMMUNITY AWARDS

HONORING LOCAL HEROES WHO MAKE GREAT NEIGHBORHOODS



## Queen Anne Victorian may be demolished



The small house at 1525 NW 24th Ave. will be razed.

Continued from page 1

he understood to be certain, "but that's just progress I guess."

Hermanson will be vacating the premises in March as he moves his design business to his home.

"I just thought it was time to test the market," he said. "Everyone thinks I should be upset, but I'm quite happy."

Kehoe said he is "not in a mad rush" to decide how he will develop the two parcels.

"I would welcome any ideas as to how to save this house," said John Bradley, chair of the Northwest District Association Planning Committee. "I see nothing in the code to hang our hat on."

The house was given a Rank III for architectural significance in the city's 1984 Historic Resource Inventory, but it is not protected by landmark status or a historic district.

City records value the Hermanson property at 1507 NW 24th Ave. at \$1,062,000. The 1929 house to the north, 1525 NW 24th Ave., is valued at \$415,000. ■

### WHO WILL JOIN THE LIST IN 2014?

To nominate someone in any category, please fill out this form and send it to:

**Northwest Examiner**                      **Deadline: Feb. 8, 2014**

2825 NW Upshur St., Suite C  
Portland, OR 97210

Nominee

|                       |           |                      |                |
|-----------------------|-----------|----------------------|----------------|
| Category: Leadership  | Education | Lifetime Achievement | Public Safety  |
| Historic Preservation | Heroism   | Other                | Social Service |

Why they should be honored

Person making nomination

Nominator's phone or email address

Nominations may also be made by answering above questions and emailing to [allan@nwexaminer.com](mailto:allan@nwexaminer.com)  
2014 Northwest Examiner Community Award night is **Saturday, May 10**



# neighborhood activist

## February 2014

**Neighbors West-Northwest**  
Serving twelve westside neighborhood associations  
2257 NW Raleigh St., Portland, OR 97210  
Phone: (503)-823-4288 Fax: (503)-223-5308  
www.nwnw.org coalition@nwnw.org

ARLINGTON HEIGHTS HILLSIDE NORTHWEST HEIGHTS PEARL DISTRICT  
FOREST PARK LINNTON NORTHWEST DISTRICT PORTLAND DOWNTOWN  
GOOSE HOLLOW NINA OLD TOWN CHINATOWN SYLVAN-HIGHLANDS

To submit an article, please email Angela Southwick at [angela@nwnw.org](mailto:angela@nwnw.org)

## Meet Your Northwest District Neighbors!



**Date:** Thursday, February 13, 2014  
**Time:** 6:00 - 8:00 PM  
**Place:** Lucky Labrador Brew Pub, 1945 NW Quimby Street,  
[luckylab.com/locations/quimby-lucky-labrador-beer-hall](http://luckylab.com/locations/quimby-lucky-labrador-beer-hall)

Come meet your neighbors, Northwest District Association Board Members, and committee members at the NWDA Meet & Greet event. Northwest neighbors and businesses are invited to an evening to share concerns and learn about the latest community updates! A brief presentation is scheduled at 7:00 p.m. Light fare hosted and enjoy a drink on us.

The NWDA is the neighborhood association serving Northwest Portland approximately bounded by W Burnside, NW Westover, NW Vaughn and I-405, including Willamette Heights and the riverfront near the Fremont Bridge. For more information and to sign-up for the NWDA e-newsletter, visit [www.northwestdistrictassociation.org](http://www.northwestdistrictassociation.org).

## Report Pole Litter!

by Mary Ann Pastene

Many of the utility poles in our neighborhoods have been illegally used to post signs advertising various products and services. Bathtub refinishing and real estate company signs are common. These signs are unsightly, difficult to remove and illegal. Please report these illegal signs to the City of Portland using the PDX Reporter smart phone app available at [www.portlandoregon.gov/bts/53613](http://www.portlandoregon.gov/bts/53613) or email a list of locations to Dennis LoGiudice, City of Portland Graffiti Abatement Program Coordinator, at [dennis.logiudice@portlandoregon.gov](mailto:dennis.logiudice@portlandoregon.gov).

## Historic Preservation

by Brian Hoop

A community-driven effort is underway to save the historic NW Natural Gas building on Hwy 30, south of the St. Johns Bridge. Linnton neighbors are needed to help out. For more info, email Kathryn at [friendsofpdxgasco@gmail.com](mailto:friendsofpdxgasco@gmail.com) or visit [www.facebook.com/SaveThePortlandHistory](http://www.facebook.com/SaveThePortlandHistory).



*Linnton's Kingsley Park improvements, including the new fence, were funded by the NW Portland Parks & Recreation Grant.*

## Elections: Forest Park Neighborhood

An election of Members of the Board of Directors will be held on Tuesday, February 18, 2014. Balloting will be continuous from 6:00 to 8:00 p.m. at the Willis Community Building at 360 NW Greenleaf Rd. (Greenleaf is a narrow road crossing Skyline about halfway between Cornell and Burnside. The building is behind the Water Bureau tank on the west side of Skyline near the antenna farm.)

Nominees for four expiring terms on the Board of Directors are:

- Susan Andrews (Incumbent)
- Carol Chesarek (Incumbent)
- Peter Blood (Incumbent)
- Scott Rosenlund (Incumbent)

Prior to the election, the FPNA president may nominate an additional candidate to complete the remainder of an unexpired term should a position be vacated. Further information may be obtained from the Neighbors West-Northwest coalition office at:

2257 NW Raleigh, Portland, OR 97210  
503 823-4288, [coalition@nwnw.org](mailto:coalition@nwnw.org)

## Neighborhood Chronicles Kick-off

**Date:** Wednesday, February 19, 2014 **Time:** 4:00 - 6:00 PM  
**Place:** Twist, 1650 NW 23rd Avenue

Calling all neighborhood scribes, wordsmiths, poets and bloggers. Come storytellers and local historians alike. Neighbors West-Northwest is hosting a neighborhood storytelling project to capture personal stories and voices of the past from local neighbors. Find out more about the Neighborhood Chronicles, Legends & Anecdotes: W-NW Collective Memoir Project! Drop by anytime between 4:00 and 6:00 p.m. for an informal chat and no-host coffee, treats or frozen yogurt. Find out more at [www.nwnw.org/projects/storytelling](http://www.nwnw.org/projects/storytelling) or by contacting Angela at [angela@nwnw.org](mailto:angela@nwnw.org), 503 823-4211.

## Friends & Family Night

**Date:** Monday, March 24, 2014  
**Time:** 5:00 PM - Close (11:00 PM)  
**Place:** McMenamins Tavern & Pool, 1716 NW 23rd

Save the date! Join us for a Friends & Family Night to benefit Neighbors West-Northwest. We will receive 50% of the night's proceeds donated courtesy of McMenamins!

## Food Drive Results

by Barbara Macnab

Thanks to everyone's efforts. NINA collected 1,439 pounds of food and \$184 in monetary donations! A special thanks to Jason Joy of Gunderson for use of his muscles and a truck! Thank you also to Harold Hutchinson of HH Click and Greg Madden of Madden Fabrication for assisting with the delivery and pick up of barrels! Participating organizations included:

- Accounting Connections
- Celio Apartments
- Culver Glass
- Equal Exchange
- General Tool
- Gunderson
- Kinder Morgan
- Madden Fabrication
- Montgomery Park
- Neighbors West-NW
- OBRC
- Penske
- Portland Pattern
- Star Industrial Supply
- SW Office Supply

## Get Involved: Share Your Perspective

### RICAP 6 OPEN HOUSE

**Date:** Thursday, February 11, 2014  
**Time:** 5:00 - 7:30 PM  
**Place:** 1900 SW 4th Ave, Suite 2500B

Regulatory Improvement Code Amendment Packages recommend amendments to land use regulations. Find a summary of the proposed amendments at [www.portlandoregon.gov/bps/ricap](http://www.portlandoregon.gov/bps/ricap). Email questions to [morgan.tracy@portlandoregon.gov](mailto:morgan.tracy@portlandoregon.gov). The comment period ends at 5:00 p.m. on Friday, February 21, 2014.

### WEST QUADRANT PLAN @ GOOSE HOLLOW

**Date:** Thursday, February 20, 2014  
**Time:** 7:00 PM  
**Place:** Multnomah Athletic Club, 1849 SW Salmon

As part of the February Goose Hollow meeting above, West Quadrant Plan staff from the City of Portland will present draft district goals, policies and implementation actions and be available for feedback and questions. For more information about this plan, contact Kathryn Hartinger at [kathryn.hartinger@portlandoregon.gov](mailto:kathryn.hartinger@portlandoregon.gov).

### FUNDING TRANSPORTATION INFRASTRUCTURE

**Date:** Thursday, February 27, 2014  
**Time:** 6:30 - 8:30 PM  
**Place:** Multnomah Arts Center, 7688 SW Capitol Hwy

Join Commissioner Novick, Mayor Hales, and City staff at a town hall meeting to discuss current unfunded transportation needs and possible solutions. Visit [www.ourstreetspdx.com](http://www.ourstreetspdx.com) for more information, additional town hall dates and to complete a survey. For additional questions, contact Mark Lear, 503 823-7604, [mark.lear@portlandoregon.gov](mailto:mark.lear@portlandoregon.gov).



# neighborhood activist Community Calendar

## Arlington Heights Neighborhood Association

[www.arlingtonheightspdx.org](http://www.arlingtonheightspdx.org)

### BOARD MEETING

Mon., February 10th  
5:30 pm  
Sylvan Fire Station  
1715 SW Skyline Blvd



## Forest Park Neighborhood Association

Contact: Jerry Grossnickle  
503 289-3046

[www.forestparkneighbors.org](http://www.forestparkneighbors.org)

### ELECTIONS

Tues., February 18th  
6:00 - 8:00 pm  
Willis Community Center  
360 NW Greenleaf



## Goose Hollow Foothills League

[www.goosehollow.org](http://www.goosehollow.org)

### NEIGHBORHOOD MEETING

Thurs., February 20th  
7:00 pm  
Multnomah Athletic Club  
1849 SW Salmon St

### Planning Committee

Tues., Feb. 4th & Mar. 4th  
7:00 pm  
First United Methodist  
1838 SW Jefferson



### Neighborhood Vision Realization Committee

Tues., Feb 4th & Mar. 4th  
8:00 am  
Hotel deLuxe  
729 SW 15th Ave

### Communications Committee

Wed., Feb. 5th & Mar. 5th  
8:00 am  
Artists Repertory Theater  
1515 SW Morrison

### Block 7 Planning Subcommittee

TBD - for updates check  
[www.goosehollow.org/calendar](http://www.goosehollow.org/calendar)  
For more information, email:  
ghfl.block7@gmail.com

## Hillside Neighborhood Association

[www.hillsidena.org](http://www.hillsidena.org)

### BOARD MEETING

Tuesday, February 11th  
7:30 pm  
Hillside Community Center  
653 NW Culpepper



## Linnton Neighborhood Association

[www.linnton.com](http://www.linnton.com)

### TOWN HALL MEETING

Wednesday  
March 5th  
7:00 pm  
Linnton Community Center  
10614 NW St Helens Rd



## Northwest District Association

[northwestdistrictassociation.org](http://northwestdistrictassociation.org)

### BOARD MEETING

Mon., February 24th, 6:00 pm  
Legacy Good Samaritan  
Wilcox ACR 102  
1015 NW 22nd Ave

### Air Quality Committee

[www.portlandair.org](http://www.portlandair.org)  
Mon., February 10th, 7:00 pm  
Silver Cloud Inn, Breakfast Rm  
NW 24th Place & Vaughn St

### Executive Committee

Wed., February 12th, 8:00 am  
NWNW Office, 2257 NW Raleigh

### Planning Committee

Thursday, Feb. 6th, 13th, 20th,  
27th, & Mar. 6th  
8:00 am

CoHo Theater, 2257 NW Raleigh  
Call to Confirm: 503 823-4212

### 2nd Saturday Clean Up

Saturday  
Feb. 8th & Mar. 8th  
9:00 am  
Food Front  
2375 NW Thurman



### 3rd Saturday Clean Up

Sat., February 15th, 9:00 am  
Elephants Deli, 115 NW 22nd  
Check [www.nwnw.org/calendar](http://www.nwnw.org/calendar)  
to confirm.

### Safety & Livability Committee

Tues., February 11th, 6:00 pm  
Legacy Good Samaritan  
Wilcox B  
1015 NW 22nd Ave

### Transportation Committee

Wed., Feb. 5th & Mar. 5th  
6:15 pm  
Legacy Good Samaritan  
Wilcox ACR 102  
1015 NW 22nd Ave

### Neighborhood Meet & Greet

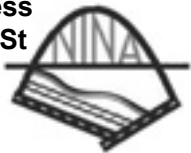
Thurs., Feb. 13th, 6:00 pm  
Lucky Lab - Quimby  
1945 NW Quimby St

## Northwest Industrial Neighborhood Association

[www.ninapdx.org](http://www.ninapdx.org)

### NINA MEETING

Tuesday, February 11th  
7:00 a.m. - Meet and greet  
7:30 a.m. - Meeting  
Holiday Inn Express  
2333 NW Vaughn St



## Northwest Heights Neighborhood Association

Contact: Charlie Clark,  
503 459-3610

### BOARD MEETING

Monday, Feb. 3rd &  
March 3rd  
12:30 pm  
FHHA Offices  
2033 NW Miller Rd

Call to confirm:  
503 823-4212



## Old Town Chinatown Community Association

[www.oldtownchinatown.org](http://www.oldtownchinatown.org)  
for committee contacts & updates

### COMMUNITY MEETING

Wed., Feb. 5th & Mar. 5th  
11:30 am

### BOARD MEETING

Wed., Feb. 5th & Mar. 5th  
1:00 pm

Meetings held at:  
University of Oregon  
70 NW Couch

### Marketing & Communications Committee

Thurs., February 20th, 3:30 pm  
One Pacific Square  
220 NW 2nd, 11th floor

### Land Use & Design Review Committee

Tues., February 18th, 11:30 am  
Location TBA  
Check with committee chairs  
See above

### Streetscape Improvement Committee

Tues., February 18th, 3:30 pm  
Location TBA  
Check with committee chair  
See above



## Pearl District Neighborhood Association

[www.pearldistrict.org](http://www.pearldistrict.org)

### BOARD MEETING

Thurs., February 13th, 6:00 pm  
PREM Group, 351 NW 12th Ave

### Executive Committee

Thurs., Feb. 6th & Mar. 6th  
8:00 am  
Urban Grind, 911 NW 14th Ave

### Livability & Safety Committee

Monday, Feb. 3rd & March 3rd  
6:00 pm  
Cupcake Jones, 307 NW 10th

### Planning & Transportation Committee

Tues., Feb. 4th, 18th & Mar. 4th  
6:00 pm  
PREM Group, 351 NW 12th Ave

### Communications Committee

Monday, February 17th, 6:00 pm  
Cupcake Jones, 307 NW 10th

### Emergency Prep Cmte

Monday, February 10th, 6:00 pm  
Ecotrust Bldg, 2nd Floor  
907 NW Irving



## Portland Downtown Neighborhood Association

[www.portlanddowntownna.com](http://www.portlanddowntownna.com)

### GENERAL MEMBERSHIP MTG

Tuesday, February 25th, 6:00 pm

### NEXT BOARD MEETING

Tuesday, February 25th, 7:00 pm

Both meetings held at:  
Meals on Wheels Elm Court  
1032 SW Main

## Portland Downtown Continued...

### Land Use & Transportation Committee

Mon., February 24th, 5:30 pm  
Eliot Tower, 3rd Fl. Meeting Room, 1221 SW 10th Ave

### Public Safety Action Committee

Wed., March 12th, 12:00 pm  
Portland Building, Room B  
1120 SW 5th Ave



## Sylvan-Highlands Neighborhood Association

[www.sylvanhighlands.org](http://www.sylvanhighlands.org)

### GENERAL MEMBERSHIP MTG

Tuesday  
February 11th  
7:00 pm



### BOARD MTG

Tuesday, February 11th, 8:00 pm

Meetings held at:  
Sylvan Fire Station  
1715 SW Skyline Blvd

## Cornell Road Sustainability Coalition

[www.cornellroad.org](http://www.cornellroad.org)

Peter Stark, [ptstark@gmail.com](mailto:ptstark@gmail.com)

TBD

Check [www.nwnw.org/calendar](http://www.nwnw.org/calendar)  
for updates

## Neighbors West-Northwest Coalition

[www.nwnw.org](http://www.nwnw.org)

### BOARD MEETING

Wed., February 12th, 5:30 pm  
Legacy Good Samaritan  
Northrup Building  
First Floor Conference Room  
2282 NW Northrup St.

### NWNW Office Closed

Monday, February 17th for  
President's Day

### Storytelling Kick Off

Wed., February 19th  
4:00 to 6:00 pm  
Twist Frozen Yogurt  
1650 NW 23rd Ave

## Skyline Ridge Neighbors

[www.srnpx.org/](http://www.srnpx.org/)

### BOARD MEETING

Thurs., Feb. 13th, 7:00 pm  
11539 NW Skyline Blvd  
(Church across from  
Skyline School)

## Nob Hill Business Association

Contact:

[info@nwpdxnobhill.com](mailto:info@nwpdxnobhill.com)

### GENERAL MEETING

Wed., February 19th  
8:30 am  
Holiday Inn Express  
2333 NW Vaughn



Find calendar updates at: [www.nwnw.org/Calendar](http://www.nwnw.org/Calendar)



# Snapshots



Children wait at Linnton Community Center for a bus taking them to Skyline Elementary School. About 25 children, many from North Portland, use the center's before- and after-school program designed for students riding the bus. Due to overcrowding and misbehavior problems on this route, Portland Public Schools may limit the number of students who can ride.



About 60 neighbors jammed the Dragonfly Coffeehouse last month for a Slabtown Community Association program on development planned in the Con-way area. (See story on page 21.)



Denny Larson of Global Community Monitor demonstrates an air sampling appliance that will be used to test air quality around Chapman Elementary School. The monitoring program is funded through a \$25,000 grant from ESCO Corp.



A new fence was installed at Kingsley Park in Linnton, the first step in a process to reestablish a park along Northwest St. Helens Road that has been abandoned for years. Access improvements, gravel pathways and new bushes are coming soon.



Cary Perkins of Windermere Foundation presents a check to Lift Urban Portland Executive Director Delanie Delimont. Lift Urban Portland is one of 40 local nonprofits sharing about \$200,000 in donations from the foundation in 2013.



Volunteers provided table service to 586 neighbors at Lift Urban Portland's annual Christmas Dinner at Temple Beth Israel.



The Northwest Children's Theater & School received a \$6,120 grant the Kinsman Foundation to help preserve the façade of the Northwest Neighborhood Cultural Center, its home for nearly 20 years. It also received a \$20,000 grant from the I-405 Parks and Recreation Fund for emergency exit lighting. In photo (L-R): Michael Stirling, building manager; David Schlicker of David Schlicker Stained Glass; architect Peter Meijer; Carolyn Sheldon, NWCT board chair; Bill Bailey, architect; and Judy Kafoury, NWCT managing director.

Local author Marcy Cottrell Houle, shown at Triple Falls near Cascade Locks, has released a new edition of "Wings for my Flight: The Peregrine Falcons of Chimney Rock." The first edition won an Oregon Book Award and New York City Library's Best Books for Teens award. President Barack Obama recently declared Chimney Rock a National Monument.





Cresap Summit 929,900



Call Dirk Hmura or Rachel Schaden

Bronson Creek 949,000



Call Lee Davies or Julie Williams

Bauer Terrace 895,000



Call Lee Davies or Julie Williams

Hartung Farms 860,000



Call Lee Davies or Cindy Prestrelski

Raleigh Hills 840,000



Call Kristan Summers or Heather Holmgreen

Bauer Oaks 639,900



Call Lawrence Burkett or Suzanne Klang

Dominion Est. Coming Soon



Call Dirk Hmura or Rachel Schaden

Bannister Creek 549,900



Call Dirk Hmura or Rachel Schaden

Oak Hills 520,000



Call Lee Davies or Cindy Prestrelski

Portland Heights 439,000



Call Dirk Hmura or Rachel Schaden

Bonny Slope 415,000



Call Coleen Jondahl or Jasmin Hausa

Orenco Station 329,900



Call Lawrence Burkett or Bob Harrington

Arbor Lane 327,900



Call Heather Holmgreen or Kristan Summers

Mowhawk Meadows 217,500



Call Trish Greene or Coleen Jondahl

The Quintet 174,000



Call Bob Harrington

Orenco Station 164,500



Call Suzanne Klang or Linda Nyman

# #1 in Luxury Homes



Broker teams serve every client; call me today and I will personally custom tailor a team to serve you.  
-Lee Davies



LEE DAVIES .COM  
REAL ESTATE

West Portland 292.1500 | Downtown 445.1500

Based on RMLS data for the number of listings sold and/or buyers represented above \$600,000 in 97229 zip code between 3/5/12 and 3/5/13.

Yamhill 499,900



Call Megan Westphal

Beaumont-Wilshire 424,900



Call Trish Greene or Andrew Misk

Eliot Tower 349,000



Call Andrew Misk

NW Portland Lot 299,900



Call Dirk Hmura or Rachel Schaden

Forest Heights Lot 280,000



Call Lee Davies or Cindy Prestrelski

Take a V-Tour of These Homes and see our Open House Schedule at [LeeDavies.com](http://LeeDavies.com)



Andrew Misk  
503.880.6400



Angie Arnett  
503.320.1988



Bob Harrington  
503.913.1296



Coleen Jondahl  
503.318.3424



Dirk Hmura  
503.740.0070



Kristan Summers  
503.680.7442



Lee Davies  
503.997.1118



Scott Jenks  
503.936.1026



Suzanne Klang  
503.310.8901



Cindy Prestrelski  
503.969.9182



Heather Holmgreen  
503.858.5141



Jasmin Hausa  
971.645.1751



Julie Williams  
503.705.5033



Lawrence Burkett  
503.680.3018



Linda Nyman  
503.267.7320



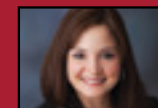
Lisa Migchelbrink  
503.970.1200



Megan Westphal  
971.998.3071



Morgan Cox  
503.349.7873



Rachel Schaden  
503.502.8910



Trish Greene  
503.998.7207

Broker Teams Serve Every Client