

# PACKY SUFFERED AND DIED AT THE OREGON ZOO

Liver damage and weight loss due to drugs used to treat his tuberculosis

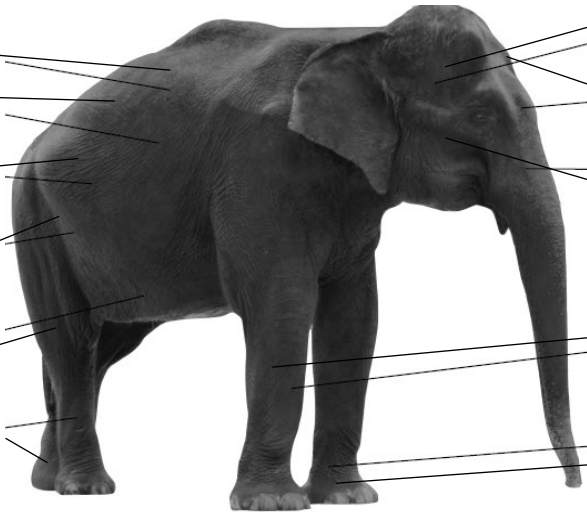
Diagnosed as emaciated in 2003

Extreme discomfort due to Portland's cold weather. Elephants are native to hot tropics

Subjected to painful, prolonged, invasive medical procedures

Confined to a barren cell and artificial display. Elephants in the wild walk up to 30 miles a day

Painful, chronic foot disease and possible arthritis from standing all day for over 50 years on concrete and packed dirt



Hygroma on right side of head

Skin lesion on left forehead from lying on concrete floor

Bobbing, swaying, and pacing due to boredom and depression. Packy and the other elephants are sensitive, intelligent animals who crave activity in nature

Possible bullhook wounds, on his right front limb, inflicted by zoo keepers to control and intimidate

Foot injury from repeatedly kicking a door, a behavioral problem arising from unnatural confinement

Contact the Oregon Zoo and the Metro Council President to urge them to stop the elephant breeding program, end the importing of elephants from the wild, and in honor of Packy, release Chendra to sanctuary now. No more elephants should suffer as Packy did.

Donald Moore, Zoo Director: [don.moore@oregonzoo.org](mailto:don.moore@oregonzoo.org) 503-220-2450

Tom Hughes, Metro President: [tom.hughes@oregonmetro.gov](mailto:tom.hughes@oregonmetro.gov) 503-797-1889

[www.FreeOregonZooElephants.org](http://www.FreeOregonZooElephants.org)

