

PACKY IS SUFFERING - YOU CAN HELP!

Liver damage and weight loss due to drugs used to treat his tuberculosis

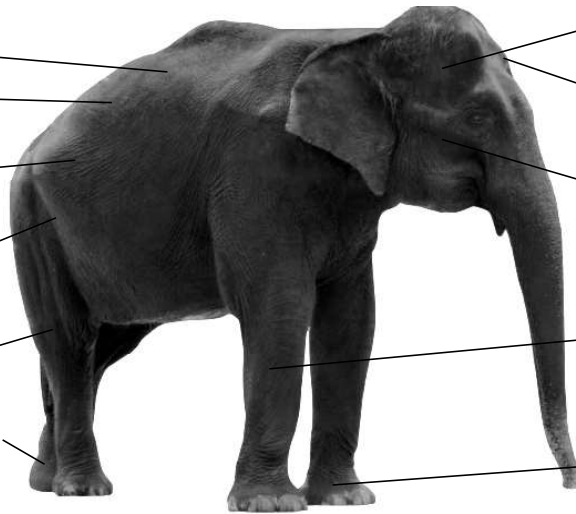
Diagnosed as emaciated in 2003

Extreme discomfort due to Portland's cold weather. Elephants are native to hot tropics

Subjected to painful, prolonged, invasive medical procedures

Confined to a barren cell and artificial display. Elephants in the wild walk up to 30 miles a day

Painful, chronic foot disease and possible arthritis from standing all day for over 50 years on concrete and packed dirt



Hygroma on right side of head

Skin lesion on left forehead from lying on concrete floor

Bobbing, swaying, and pacing due to boredom and depression. Packy and the other elephants are sensitive, intelligent animals who crave activity in nature

Possible bullhook wounds, on his right front limb, inflicted by zoo keepers to control and intimidate

Foot injury from repeatedly kicking a door, a behavioral problem arising from unnatural confinement

Contact the Oregon Zoo and the Metro Council President to urge them to allow Packy to retire to a sanctuary where he can live his remaining years in comfort and freedom, and to abandon their plan to breed more elephants in captivity.

Donald Moore, Zoo Director: don.moore@oregonzoo.org 503-220-2450

Tom Hughes, Metro President: tom.hughes@oregonmetro.gov 503-797-1889

Free the Oregon Zoo Elephants is committed to achieving freedom for Packy and the five other zoo elephants

www.FreeOregonZooElephants.org



PACKY IS SUFFERING - YOU CAN HELP!

Liver damage and weight loss due to drugs used to treat his tuberculosis

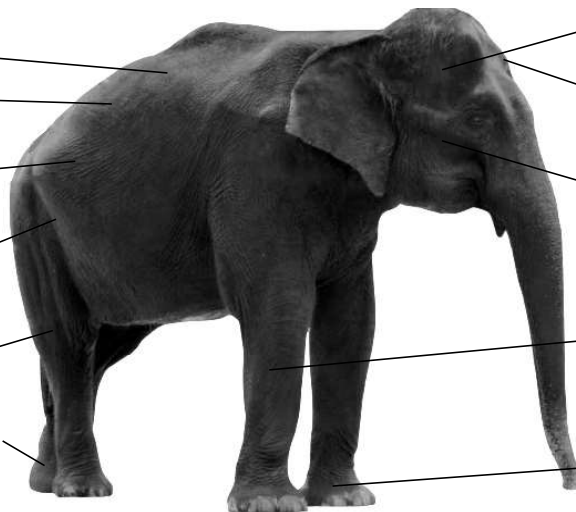
Diagnosed as emaciated in 2003

Extreme discomfort due to Portland's cold weather. Elephants are native to hot tropics

Subjected to painful, prolonged, invasive medical procedures

Confined to a barren cell and artificial display. Elephants in the wild walk up to 30 miles a day

Painful, chronic foot disease and possible arthritis from standing all day for over 50 years on concrete and packed dirt



Hygroma on right side of head

Skin lesion on left forehead from lying on concrete floor

Bobbing, swaying, and pacing due to boredom and depression. Packy and the other elephants are sensitive, intelligent animals who crave activity in nature

Possible bullhook wounds, on his right front limb, inflicted by zoo keepers to control and intimidate

Foot injury from repeatedly kicking a door, a behavioral problem arising from unnatural confinement

Contact the Oregon Zoo and the Metro Council President to urge them to allow Packy to retire to a sanctuary where he can live his remaining years in comfort and freedom, and to abandon their plan to breed more elephants in captivity.

Donald Moore, Zoo Director: don.moore@oregonzoo.org 503-220-2450

Tom Hughes, Metro President: tom.hughes@oregonmetro.gov 503-797-1889

Free the Oregon Zoo Elephants is committed to achieving freedom for Packy and the five other zoo elephants

www.FreeOregonZooElephants.org

